

County Health Rankings & Roadmaps

Building a Culture of Health, County by County

A Robert Wood Johnson Foundation program

TACKLING POVERTY IN RURAL COMMUNITIES



Ali Havrilla
Community Coach



Kate Konkle
Action Center Team
Director



Melissa Freigang
V.P. of Social Innovations
and Workforce
Initiatives, Logistic
Specialties, Inc.

September 12, 2017

countyhealthrankings.org



University of Wisconsin
Population Health Institute
SCHOOL OF MEDICINE AND PUBLIC HEALTH

Support
provided by



Robert Wood Johnson
Foundation

County Health Rankings & Roadmaps

Building a Culture of Health, County by County

A Robert Wood Johnson Foundation program

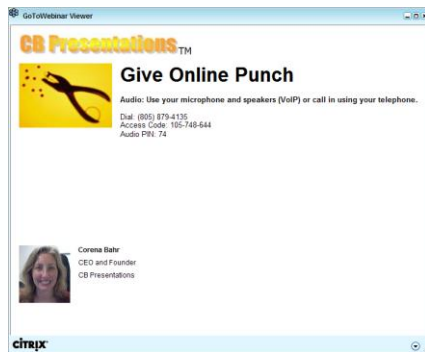


County Health Rankings & Roadmaps is a collaboration between the Robert Wood Johnson Foundation and the University of Wisconsin Population Health Institute.

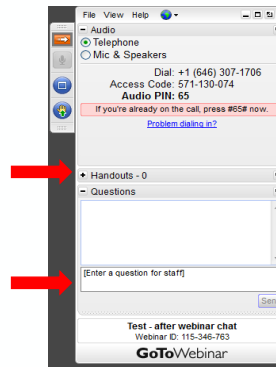
www.countyhealthrankings.org

GO TO WEBINAR ATTENDEE INTERFACE

1. Viewer Window

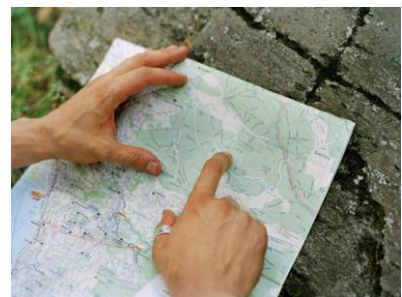


2. Control Panel



ROADMAP FOR TODAY'S WEBINAR

- ▶ *County Health Rankings & Roadmaps* overview, tools and resources
- ▶ A system change approach to tackling poverty: Weber County Utah's Intergenerational Poverty Initiative
- ▶ Q&A
- ▶ Upcoming Opportunities





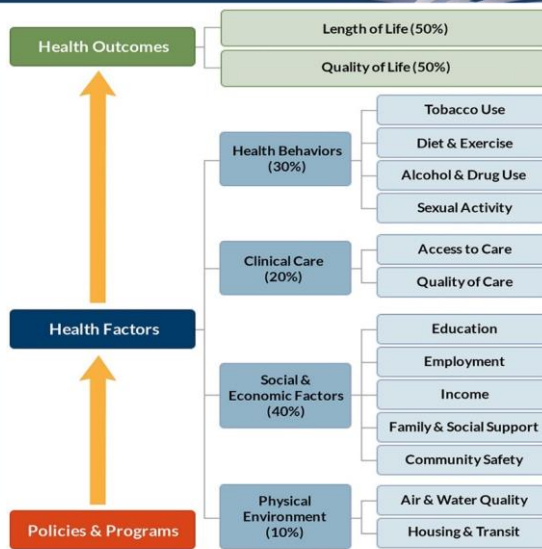
We, as a nation, will strive together to create a culture of health enabling all in our diverse society to lead healthy lives, now and for generations to come.



County Health Rankings & Roadmaps
 Building a Culture of Health, County by County

A Robert Wood Johnson Foundation program

County Health Rankings:
 Defining health in the broadest possible terms



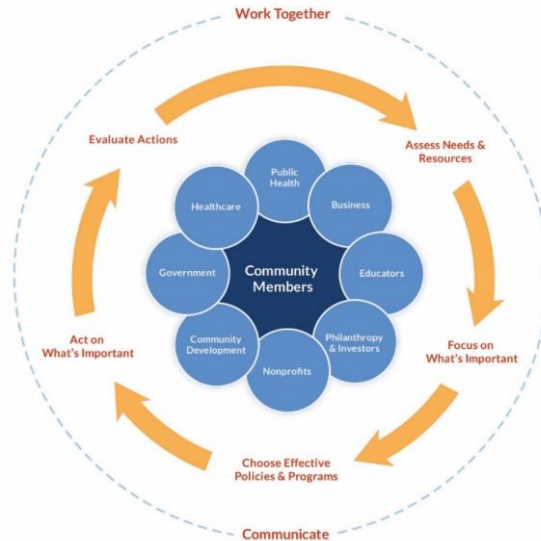
County Health Rankings model © 2014 UWPHI

County Health Rankings & Roadmaps

Building a Culture of Health, County by County

A Robert Wood Johnson Foundation program

Roadmaps to Health:
Harnessing the collective power of leaders, partners & community



County Health Rankings & Roadmaps

Building a Culture of Health, County by County

A Robert Wood Johnson Foundation program

CHR&R CHILDREN IN POVERTY DATA RESOURCES

▶ Ranked Measures

- High school graduation
- % of children under 18 in poverty
- Unemployment
- Income inequality
- Children in single-parent households
- Severe housing problems

Measure	Value	Rank (of 21)
County Demographics	12	11
Health Outcomes	17	17
Length of Life	125	15%
Preventable death	34.36	30
Quality of Life	36.19	30
Poor air for health	3.7	7%
Poor physical health days	8%	6%
Poor mental health days	13-12%	14%
Low air change	14%	7%
Additional Health Outcomes (not included in overall ranking)	21	
Health Factors	24	
Health Behaviors	12%	
Adult smoking	13-12%	14%

▶ Snapshot: Ranked Measures

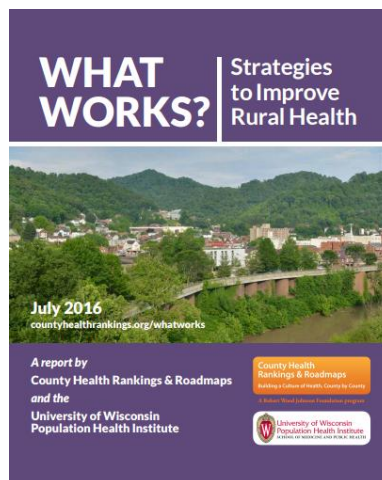
- High school graduation, unemployment, children in poverty, income inequality, children in single-parent households, severe housing problems

▶ Additional Measures

- Children eligible for free/reduced lunch
- Disconnected youth

WHAT WORKS FOR HEALTH: A MENU OF IDEAS

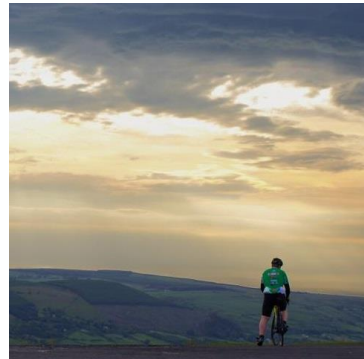
- ▶ Evidence rating
- ▶ Literature summary
 - Who
 - What
 - Cost
- ▶ Disparity rating
- ▶ Implementation resources



www.countyhealthrankings.org/rural

WHAT'S WORKING TO ...

- ▶ Prepare & strengthen the local workforce?
- ▶ Reduce injuries?
- ▶ Improve access to high quality health care?
- ▶ Improve diet & increase exercise?
- ▶ And more...



11

CHILDREN IN POVERTY- EVIDENCE RESOURCES



What Works for Health

Explore programs and policies
that work!

- ▶ Extracurricular activities for social engagement
- ▶ Social service integration
- ▶ Trauma-informed approaches to community building

County Health Rankings & Roadmaps

Building a Culture of Health, County by County

A Robert Wood Johnson Foundation program

TODAY'S GUEST...



Melissa Freigang
Vice President, Social Innovation
and Workforce Initiatives
Logistic Specialties, Inc.

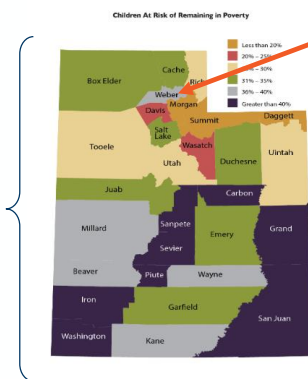
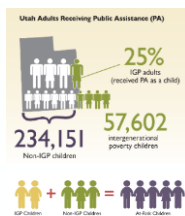
13

County Health Rankings & Roadmaps

Building a Culture of Health, County by County

A Robert Wood Johnson Foundation program

WEBER COUNTY, UT



County Health Rankings – Poverty

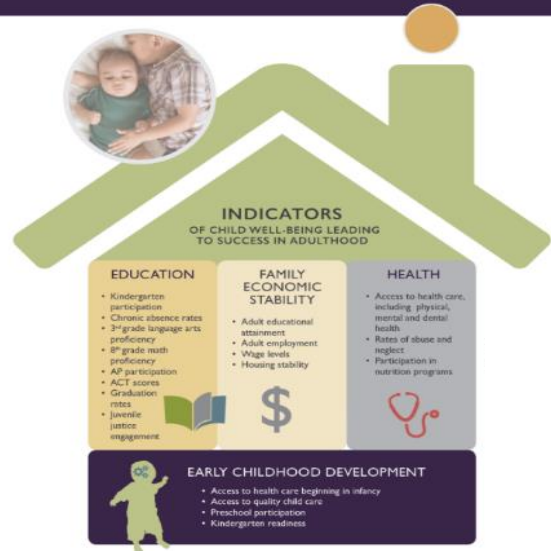
- 16% of Weber County children under the age of 18 are in poverty.
- 14% of Weber County teens and young adults ages 16-24 are neither working or in school.
- 46% of Weber County children are eligible for free or reduced price lunch.

14

INTERGENERATIONAL POVERTY

UTAH - INDICATORS OF CHILD WELL-BEING

- ▶ Early Childhood Development
- ▶ Education
- ▶ Family Economic Stability
- ▶ Health

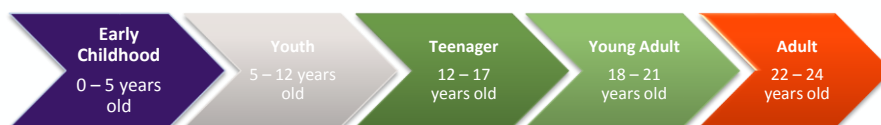


INTERGENERATIONAL POVERTY – WEBER COUNTY

10% of Weber County children equaling **6,982** are experiencing intergenerational poverty

28% of Weber County children are at-risk of remaining in poverty as adults

1820 16-21 year olds who are experiencing intergenerational poverty have children themselves

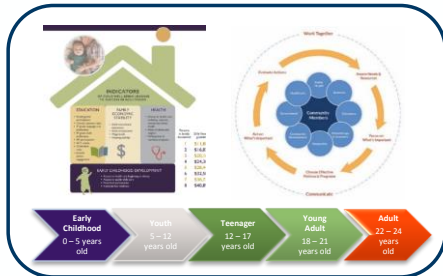


County Health Rankings & Roadmaps

Building a Culture of Health, County by County

A Robert Wood Johnson Foundation program

SYSTEMS CHANGE IN WEBER COUNTY



▶ **Welfare Reform Commission** government agencies with legislative and policy authority.

- Chair - Commissioner Ebert
- Department of Health
- Superintendent, Ogden School District
- Superintendent, Weber School District
- Behavioral Health
- 2nd District Courts
- Department of Workforce Services
- Chair, IGP Advisory Committee

▶ **Intergenerational Poverty Advisory Committee** – all other stakeholders in the intergenerational poverty eco-system.

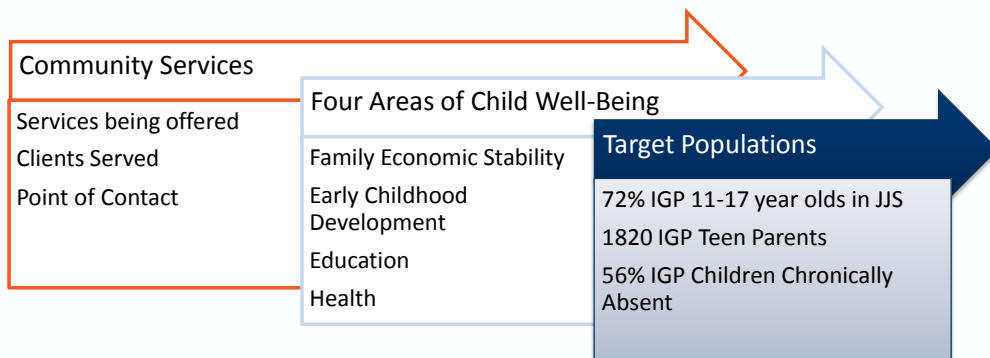
- Chair – Marlin Jensen
- Reps from Welfare Commission
- Spiritual Leaders
- IGP Families
- For-Profit and Non-Profit Service Providers
- Economic Development
- Legislators
- Industry Leaders

County Health Rankings & Roadmaps

Building a Culture of Health, County by County

A Robert Wood Johnson Foundation program

GETTING STARTED – ASSET AND RESOURCE MAPPING



County Health Rankings & Roadmaps

Building a Culture of Health, County by County

A Robert Wood Johnson Foundation program

TARGET POPULATIONS

- 72% children ages 11-17 years old experiencing IGP poverty have involvement with Juvenile Justice
- 17% of the school district enrollments are children experiencing IGP poverty
- 46% of the school districts enrollments are children enrolled in public assistance
- 56% of those enrolled receiving public assistance are chronically absent

Juvenile Justice Services – Case Workers
District Courts – Case Workers
Spiritual Leaders – Bishops, Pastors, Priests
Schools – Teachers, Counselors
Athletics, Music, Recreation – Coaches, Teachers, Mentors
Behavioral Health – Mental Health Counselors
Family Economic Stability – Career Advocates

County Health Rankings & Roadmaps

Building a Culture of Health, County by County

A Robert Wood Johnson Foundation program

LOOKING AT THE WHOLE PERSON



• IGP Advisory Committee

Asset Map around populations of children experiencing the negative effects of intergenerational poverty.

• Welfare Reform Commission

Remove Siloes, focus on systems change through the identification of the IGP child, sharing information and having a data platform(s).

MULTIPLE PARTNERS WILL PROVIDE WRAP-AROUND SERVICES FOR EACH CHILD. THIS INTEGRATION WILL BE LEAD THROUGH A CHILD NAVIGATOR TO HELP CHILDREN AND/OR PARENTS ACCESS COMMUNITY RESOURCES, CUSTOMIZE PROGRAMMING AND TRACK DATA FOR THAT CHILD AND INTERVENTIONS OVER TIME.

WHAT'S NEXT?



- ▶ Children in Weber County will grow-up to be self-determined



QUESTIONS?

DISCUSSION GROUP: TACKLING POVERTY IN RURAL COMMUNITIES

- ▶ **When:** September 19th from 3-4PM ET
- ▶ **How:** videoconference and/or phone
- ▶ **Why:** deepen the webinar learning, allow further exploration
- ▶ **Who:** YOU! (Space is limited)
- ▶ **What:** interactive learning experience, opportunity to share ideas and ask questions



DISCUSSION GROUP: NEXT STEPS

- ▶ Register
- ▶ Check technology
- ▶ Be prepared to discuss
 - Where are there opportunities in your community related to increasing school stability or today's webinar?
 - Where is more work needed in your community?
 - What are some options for addressing areas of need?



RURAL IMPACT COUNTY CHALLENGE – ROUND 2

- ▶ National initiative to help advance counties' efforts to reduce the number of rural children and families living in poverty
- ▶ Recognizes and supports counties making real difference in the lives of children in rural communities.
- ▶ RICC Community Coaching
- ▶ www.NACo.org/RuralImpact

RURAL IMPACT
COUNTY CHALLENGE 

RWJF Culture of Health Prize 2018 Call for Applications



Prize communities will receive \$25,000, have the opportunity to share their story and lessons learned with the country, and join a national network of past winning communities.

To learn about the Prize application process and criteria, visit:

rwjf.org/Prize

**Applications are due
Nov. 3, 2017, 3pm ET**



STAYING CONNECTED

- ▶ Follow @CHRankings
- ▶ Like Facebook.com/
CountyHealthRankings
- ▶ e-Newsletter, email
chr@match.wisc.edu to
subscribe



THANK YOU!

Aliana Havrilla

Aliana.Havrilla@match.wisc.edu

Melissa Freigang

mfreigang@lsiwins.com

www.countyhealthrankings.org

University of Wisconsin Population Health Institute
Madison, WI

match-info@match.wisc.edu

(608) 265-8240

THANK YOU!

Aliana Havrilla

Aliana.Havrilla@match.wisc.edu

Melissa Freigang

mfreigang@lsiwins.com

www.countyhealthrankings.org

University of Wisconsin Population Health Institute
Madison, WI

match-info@match.wisc.edu

(608) 265-8240