

# County Health Rankings & Roadmaps

Building a Culture of Health, County by County

A Robert Wood Johnson Foundation program

## 2014 *Rankings*

# Iowa



A collaboration between the Robert Wood Johnson Foundation and the University of Wisconsin Population Health Institute.



Support provided by

Robert Wood Johnson Foundation



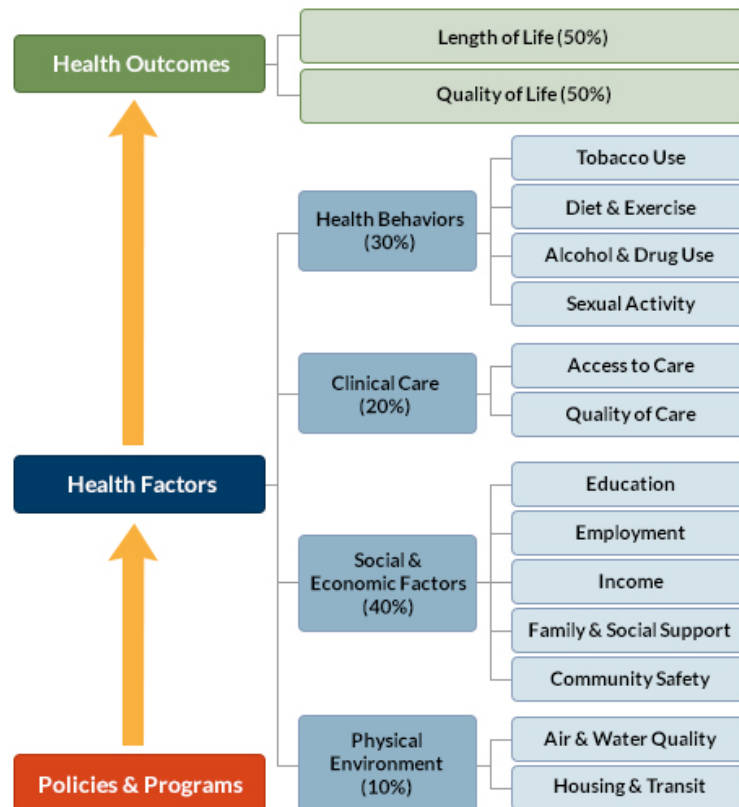
INSIDE FRONT COVER – INTENTIONALLY BLANK

## INTRODUCTION

The *County Health Rankings & Roadmaps* program helps communities identify and implement solutions that make it easier for people to be healthy in their schools, workplaces, and neighborhoods. Ranking the health of nearly every county in the nation, the *County Health Rankings* illustrate *what we know* when it comes to what is making people sick or healthy. The *Roadmaps* show *what we can do* to create healthier places to live, learn, work, and play. The Robert Wood Johnson Foundation (RWJF) collaborates with the University of Wisconsin Population Health Institute (UWPHI) to bring this program to cities, counties, and states across the nation.

## WHAT ARE THE COUNTY HEALTH RANKINGS?

The *County Health Rankings* measure the health of nearly every county in the nation. Published online at [countyhealthrankings.org](http://countyhealthrankings.org), the *Rankings* help counties understand what influences how healthy residents are and how long they will live. The *Rankings* look at a variety of measures that affect health, such as high school graduation rates, access to healthy foods, rates of smoking, obesity, and teen births. Based on data available for each county, the *Rankings* are unique in their ability to measure the overall health of each county in all 50 states. They have been used to garner support for local health improvement initiatives among government agencies, healthcare providers, community organizations, business leaders, policy makers, and the public.



## HOW ARE PEOPLE USING THE RANKINGS?

- Ø Highlighting community success
- Ø Identifying root causes of poor health
- Ø Supporting policy change
- Ø Engaging communities in health improvement

For more information, visit [countyhealthrankings.org](http://countyhealthrankings.org)

## WHAT ARE THE ROADMAPS TO HEALTH?

The *Roadmaps to Health* help communities bring people together to look at the many factors that influence health, select strategies that work, and make changes that will have a lasting impact. The *Roadmaps* focus on helping communities determine what they can do and what they can learn from others.

### What You Can Do

The *Roadmaps to Health* Action Center provides step-by-step guides, tools, and webinars to help groups working to improve the health of their communities. Community Coaches also provide customized consultation to local communities that have demonstrated a willingness to address factors that we know influence health, such as education, income, and community safety.

The Action Center also features *What Works for Health* – a searchable database of evidence-informed policies and programs that can improve health.

### Learning From Others

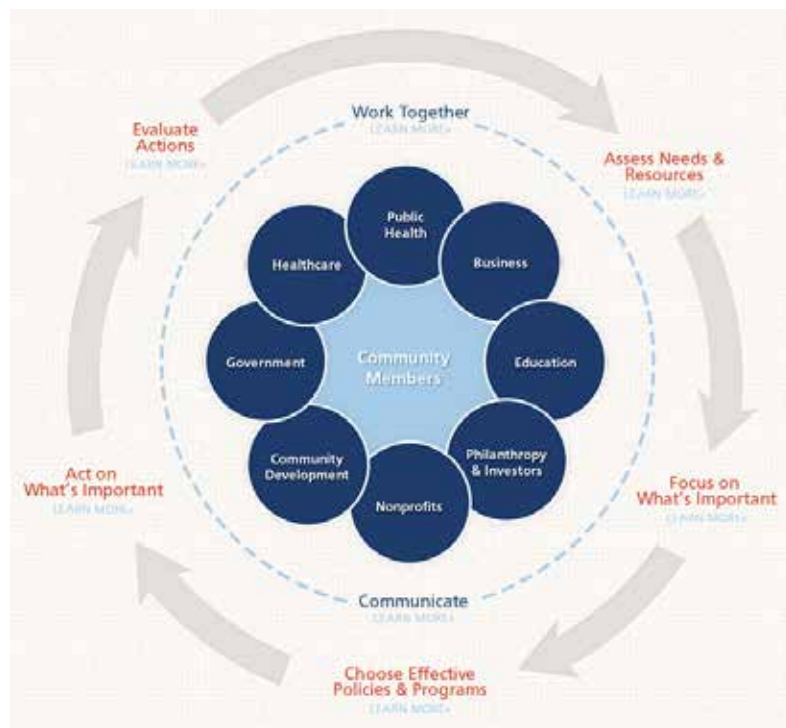
Honoring the efforts of communities working at the forefront of health improvement, the Robert Wood

Johnson Foundation annually awards the *RWJF Culture of Health Prize* to outstanding communities that are working toward better health. The *Prize* recognizes communities with strong and diverse partnerships that are coming together with a shared vision and commitment to address multiple factors that affect health and make lasting changes that create a culture of health for all. Visit [countyhealthrankings.org](http://countyhealthrankings.org) or [rwjf.org/prize](http://rwjf.org/prize) to learn about the work of past prize winners.

At [countyhealthrankings.org](http://countyhealthrankings.org), we also feature stories from communities across the nation who have used data from the *County Health Rankings* or have engaged in strategies to improve health. For example, you can learn from the successes and challenges of the 30 *Roadmaps to Health* Community Grantees. These grantees are working to create positive policy or systems changes that address social and economic factors that influence how healthy people are and how long they live, such as education and community safety. You might also want to contact your local affiliate of United Way Worldwide, the National Business Coalition on Health, or the National Association of Counties - their national parent organizations have partnered with us to raise awareness and stimulate action to improve health in their local members' communities.

## How can you get involved?

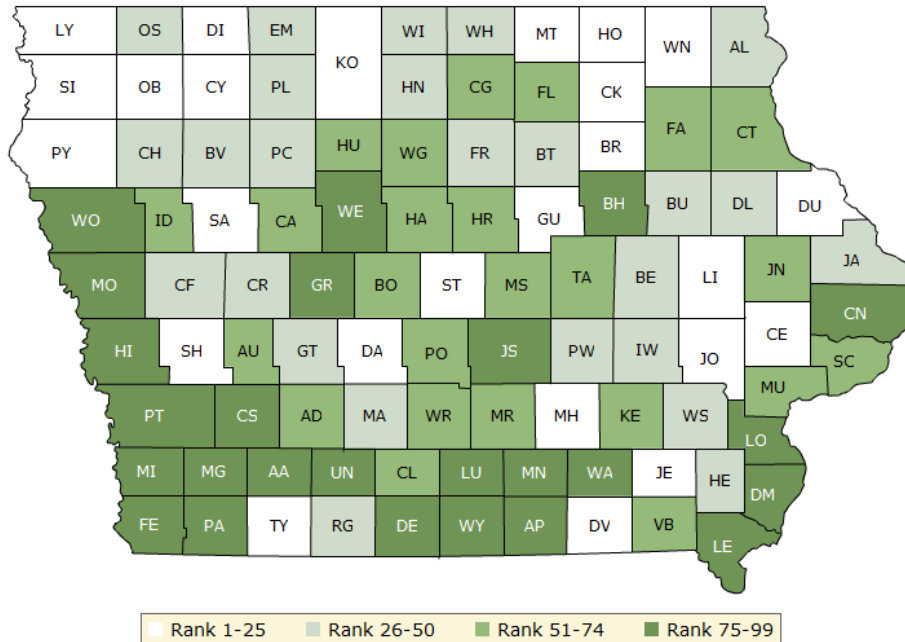
In communities large and small, people from all walks of life are taking ownership and action to improve health. Visit [countyhealthrankings.org](http://countyhealthrankings.org) to get ideas and guidance on how you can take action in your community. Working with others, you can improve the health of your community.



The green map below shows the distribution of Iowa's **health outcomes**, based on an equal weighting of length and quality of life.

Lighter colors indicate better performance in the respective summary rankings. Detailed information on the underlying measures is available on our web site.

### HEALTH OUTCOMES RANKS

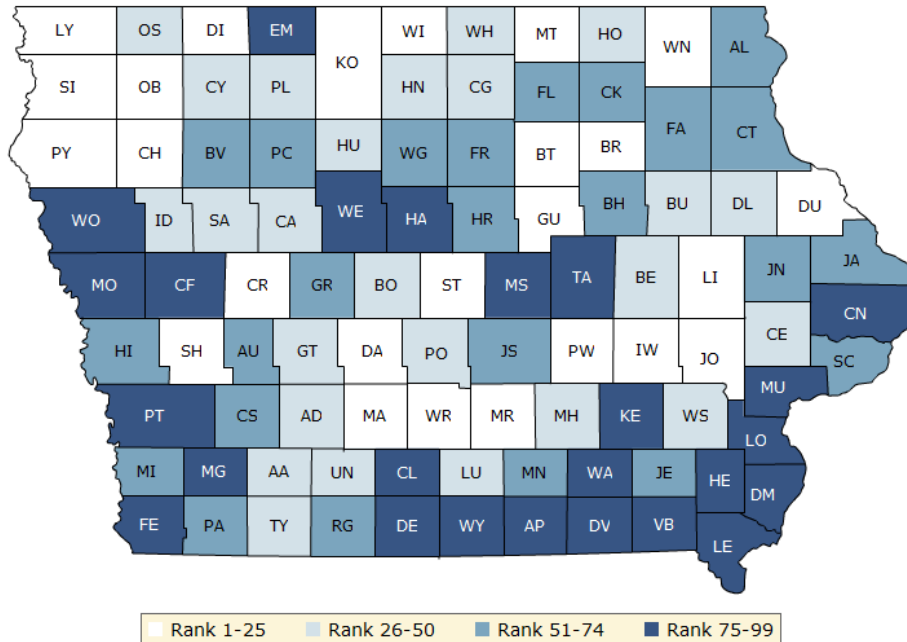


County	Rank	County	Rank	County	Rank	County	Rank
Adair	56	Davis	6	Jefferson	14	Pocahontas	50
Adams	98	Decatur	77	Johnson	13	Polk	63
Allamakee	48	Delaware	38	Jones	52	Pottawattamie	86
Appanoose	99	Des Moines	80	Keokuk	53	Poweshiek	28
Audubon	74	Dickinson	10	Kossuth	7	Ringgold	39
Benton	33	Dubuque	20	Lee	90	Sac	17
Black Hawk	75	Emmet	26	Linn	23	Scott	64
Boone	67	Fayette	65	Louisa	94	Shelby	15
Bremer	12	Floyd	59	Lucas	81	Sioux	1
Buchanan	43	Franklin	41	Lyon	4	Story	8
Buena Vista	35	Fremont	92	Madison	42	Tama	66
Butler	34	Greene	84	Mahaska	19	Taylor	22
Calhoun	68	Grundy	25	Marion	55	Union	85
Carroll	46	Guthrie	40	Marshall	73	Van Buren	71
Cass	87	Hamilton	57	Mills	97	Wapello	88
Cedar	18	Hancock	29	Mitchell	5	Warren	61
Cerro Gordo	51	Hardin	60	Monona	83	Washington	47
Cherokee	45	Harrison	82	Monroe	91	Wayne	96
Chickasaw	3	Henry	31	Montgomery	95	Webster	93
Clarke	70	Howard	24	Muscatine	62	Winnebago	49
Clay	16	Humboldt	72	O'Brien	21	Winneshiek	2
Clayton	54	Ida	58	Osceola	37	Woodbury	76
Clinton	78	Iowa	30	Page	79	Worth	27
Crawford	36	Jackson	44	Palo Alto	32	Wright	69
Dallas	11	Jasper	89	Plymouth	9		

The blue map displays Iowa's summary ranks for **health factors**, based on weighted scores for health behaviors, clinical care, social and economic factors, and the physical environment.

Lighter colors indicate better performance in the respective summary rankings. Detailed information on the underlying measures is available on our web site.

### HEALTH FACTORS RANKS



County	Rank	County	Rank	County	Rank	County	Rank
Adair	26	Davis	97	Jefferson	67	Pocahontas	52
Adams	47	Decatur	83	Johnson	2	Polk	39
Allamakee	71	Delaware	35	Jones	62	Pottawattamie	88
Appanoose	98	Des Moines	96	Keokuk	80	Poweshiek	13
Audubon	70	Dickinson	24	Kossuth	17	Ringgold	59
Benton	43	Dubuque	8	Lee	99	Sac	44
Black Hawk	66	Emmet	77	Linn	23	Scott	74
Boone	45	Fayette	73	Louisa	94	Shelby	19
Bremer	4	Floyd	58	Lucas	46	Sioux	6
Buchanan	34	Franklin	53	Lyon	12	Story	1
Buena Vista	64	Fremont	78	Madison	22	Tama	86
Butler	20	Greene	55	Mahaska	38	Taylor	36
Calhoun	49	Grundy	7	Marion	9	Union	48
Carroll	18	Guthrie	28	Marshall	87	Van Buren	89
Cass	65	Hamilton	85	Mills	56	Wapello	93
Cedar	27	Hancock	42	Mitchell	15	Warren	11
Cerro Gordo	41	Hardin	54	Monona	75	Washington	40
Cherokee	25	Harrison	60	Monroe	61	Wayne	84
Chickasaw	57	Henry	81	Montgomery	79	Webster	92
Clarke	90	Howard	31	Muscatine	82	Winnebago	14
Clay	37	Humboldt	50	O'Brien	21	Winneshiek	3
Clayton	72	Ida	33	Osceola	32	Woodbury	95
Clinton	91	Iowa	16	Page	63	Worth	29
Crawford	76	Jackson	51	Palo Alto	30	Wright	69
Dallas	5	Jasper	68	Plymouth	10		

## Summary Health Outcomes & Health Factors Rankings

Counties receive two ranks:

- Health Outcomes
- Health Factors

Each of these ranks represents a weighted summary of a number of measures.

Health outcomes represent how healthy a county is while health factors represent what influences the health of the county.

Rank	Health Outcomes	Rank	Health Factors
1	Sioux	1	Story
2	Winneshiek	2	Johnson
3	Chickasaw	3	Winneshiek
4	Lyon	4	Bremer
5	Mitchell	5	Dallas
6	Davis	6	Sioux
7	Kossuth	7	Grundy
8	Story	8	Dubuque
9	Plymouth	9	Marion
10	Dickinson	10	Plymouth
11	Dallas	11	Warren
12	Bremer	12	Lyon
13	Johnson	13	Poweshiek
14	Jefferson	14	Winnebago
15	Shelby	15	Mitchell
16	Clay	16	Iowa
17	Sac	17	Kossuth
18	Cedar	18	Carroll
19	Mahaska	19	Shelby
20	Dubuque	20	Butler
21	O'Brien	21	O'Brien
22	Taylor	22	Madison
23	Linn	23	Linn
24	Howard	24	Dickinson
25	Grundy	25	Cherokee
26	Emmet	26	Adair
27	Worth	27	Cedar
28	Poweshiek	28	Guthrie
29	Hancock	29	Worth
30	Iowa	30	Palo Alto
31	Henry	31	Howard
32	Palo Alto	32	Osceola
33	Benton	33	Ida
34	Butler	34	Buchanan
35	Buena Vista	35	Delaware
36	Crawford	36	Taylor
37	Osceola	37	Clay
38	Delaware	38	Mahaska
39	Ringgold	39	Polk
40	Guthrie	40	Washington

Rank	Health Outcomes	Rank	Health Factors
41	Franklin	41	Cerro Gordo
42	Madison	42	Hancock
43	Buchanan	43	Benton
44	Jackson	44	Sac
45	Cherokee	45	Boone
46	Carroll	46	Lucas
47	Washington	47	Adams
48	Allamakee	48	Union
49	Winnebago	49	Calhoun
50	Pocahontas	50	Humboldt
51	Cerro Gordo	51	Jackson
52	Jones	52	Pocahontas
53	Keokuk	53	Franklin
54	Clayton	54	Hardin
55	Marion	55	Greene
56	Adair	56	Mills
57	Hamilton	57	Chickasaw
58	Ida	58	Floyd
59	Floyd	59	Ringgold
60	Hardin	60	Harrison
61	Warren	61	Monroe
62	Muscatine	62	Jones
63	Polk	63	Page
64	Scott	64	Buena Vista
65	Fayette	65	Cass
66	Tama	66	Black Hawk
67	Boone	67	Jefferson
68	Calhoun	68	Jasper
69	Wright	69	Wright
70	Clarke	70	Audubon
71	Van Buren	71	Allamakee
72	Humboldt	72	Clayton
73	Marshall	73	Fayette
74	Audubon	74	Scott
75	Black Hawk	75	Monona
76	Woodbury	76	Crawford
77	Decatur	77	Emmet
78	Clinton	78	Fremont
79	Page	79	Montgomery
80	Des Moines	80	Keokuk
81	Lucas	81	Henry
82	Harrison	82	Muscatine
83	Monona	83	Decatur
84	Greene	84	Wayne
85	Union	85	Hamilton
86	Pottawattamie	86	Tama
87	Cass	87	Marshall
88	Wapello	88	Pottawattamie



Rank	Health Outcomes	Rank	Health Factors
89	Jasper	89	Van Buren
90	Lee	90	Clarke
91	Monroe	91	Clinton
92	Fremont	92	Webster
93	Webster	93	Wapello
94	Louisa	94	Louisa
95	Montgomery	95	Woodbury
96	Wayne	96	Des Moines
97	Mills	97	Davis
98	Adams	98	Appanoose
99	Appanoose	99	Lee

## 2014 County Health Rankings: Measures, Data Sources, and Years of Data

	Measure	Data Source	Years of Data
<b>HEALTH OUTCOMES</b>			
<b>Length of Life</b>	Premature death	National Center for Health Statistics	2008-2010
<b>Quality of Life</b>	Poor or fair health	Behavioral Risk Factor Surveillance System	2006-2012
	Poor physical health days	Behavioral Risk Factor Surveillance System	2006-2012
	Poor mental health days	Behavioral Risk Factor Surveillance System	2006-2012
	Low birthweight	National Center for Health Statistics	2005-2011
<b>HEALTH FACTORS</b>			
<b>HEALTH BEHAVIORS</b>			
<b>Tobacco Use</b>	Adult smoking	Behavioral Risk Factor Surveillance System	2006-2012
<b>Diet and Exercise</b>	Adult obesity	National Center for Chronic Disease Prevention and Health Promotion	2010
	Food environment index	USDA Food Environment Atlas, Map the Meal Gap	2010-2011
	Physical inactivity	National Center for Chronic Disease Prevention and Health Promotion	2010
	Access to exercise opportunities	OneSource Global Business Browser, Delorme map data, ESRI, & US Census Tigerline Files	2010 & 2012
<b>Alcohol and Drug Use</b>	Excessive drinking	Behavioral Risk Factor Surveillance System	2006-2012
	Alcohol-impaired driving deaths	Fatality Analysis Reporting System	2008-2012
<b>Sexual Activity</b>	Sexually transmitted infections	National Center for HIV/AIDS, Viral Hepatitis, STD, and TB prevention	2011
	Teen births	National Center for Health Statistics	2005-2011
<b>CLINICAL CARE</b>			
<b>Access to Care</b>	Uninsured	Small Area Health Insurance Estimates	2011
	Primary care physicians	HRSA Area Resource File	2011
	Dentists	HRSA Area Resource File	2012
	Mental health providers	CMS, National Provider Identification	2013
<b>Quality of Care</b>	Preventable hospital stays	Medicare/Dartmouth Institute	2011
	Diabetic screening	Medicare/Dartmouth Institute	2011
	Mammography screening	Medicare/Dartmouth Institute	2011
<b>SOCIAL AND ECONOMIC FACTORS</b>			
<b>Education</b>	High school graduation	data.gov, supplemented with National Center for Education Statistics	2010-2011
	Some college	American Community Survey	2008-2012
<b>Employment</b>	Unemployment	Bureau of Labor Statistics	2012
<b>Income</b>	Children in poverty	Small Area Income and Poverty Estimates	2012
<b>Family and Social Support</b>	Inadequate social support	Behavioral Risk Factor Surveillance System	2005-2010
	Children in single-parent households	American Community Survey	2008-2012
<b>Community Safety</b>	Violent crime	Uniform Crime Reporting - FBI	2009-2011
	Injury deaths	CDC WONDER	2006-2010
<b>PHYSICAL ENVIRONMENT</b>			
<b>Air and Water Quality</b>	Air pollution - particulate matter <sup>1</sup>	CDC WONDER	2011
	Drinking water violations	Safe Drinking Water Information System	FY 2012-2013
<b>Housing and Transit</b>	Severe housing problems	HUD, Comprehensive Housing Affordability Strategy	2006-2010
	Driving alone to work	American Community Survey	2008-2012
	Long commute – driving alone	American Community Survey	2008-2012

<sup>1</sup> Not available for AK and HI.

CREDITS

**Report Authors**

University of Wisconsin-Madison  
School of Medicine and Public Health  
Department of Population Health Sciences  
Population Health Institute

Bridget Catlin, PhD, MHSA  
Amanda Jovaag, MS  
Julie Willems Van Dijk, PhD, RN  
Patrick Remington, MD, MPH

This publication would not have been possible without the following contributions:

***Data***

Centers for Disease Control and Prevention: National Center for Health Statistics and Division of Behavioral Surveillance  
Dartmouth Institute for Health Policy & Clinical Practice

***Research Assistance***

Jennifer Buechner  
Hyojun Park, MA  
Elizabeth Pollock  
Jennifer Robinson  
Matthew Rodock, MPH  
Anne Roubal, MS

***Communications and Outreach***

Burness Communications  
Alison Bergum, MPA  
Matthew Call  
Kate Konkle, MPH  
Kitty Jerome, MA  
Karen Odegaard, MPH  
Jan O'Neill, MPA

***Design***

Forum One, Alexandria, VA

***Robert Wood Johnson Foundation***

Abbey Cofsky, MPH – Senior Program Officer  
Michelle Larkin, JD, MS, RN – Assistant Vice-President, Program Portfolios  
Marjorie Paloma, MPH – Senior Policy Advisor  
James S. Marks, MD, MPH – Senior Vice-President and Director, Program Portfolios  
Joe Marx – Senior Communications Officer

Suggested citation: University of Wisconsin Population Health Institute. *County Health Rankings 2014*.

# County Health Rankings & Roadmaps

Building a Culture of Health, County by County

[countyhealthrankings.org](http://countyhealthrankings.org)



University of Wisconsin Population Health Institute  
610 Walnut St, #524, Madison, WI 53726  
(608) 265-8240 / [info@countyhealthrankings.org](mailto:info@countyhealthrankings.org)

