

County Health Rankings & Roadmaps

Building a Culture of Health, County by County

A Robert Wood Johnson Foundation program

2014 *Rankings* Mississippi



A collaboration between the Robert Wood Johnson Foundation and the University of Wisconsin Population Health Institute.



Support
provided by

Robert Wood Johnson
Foundation



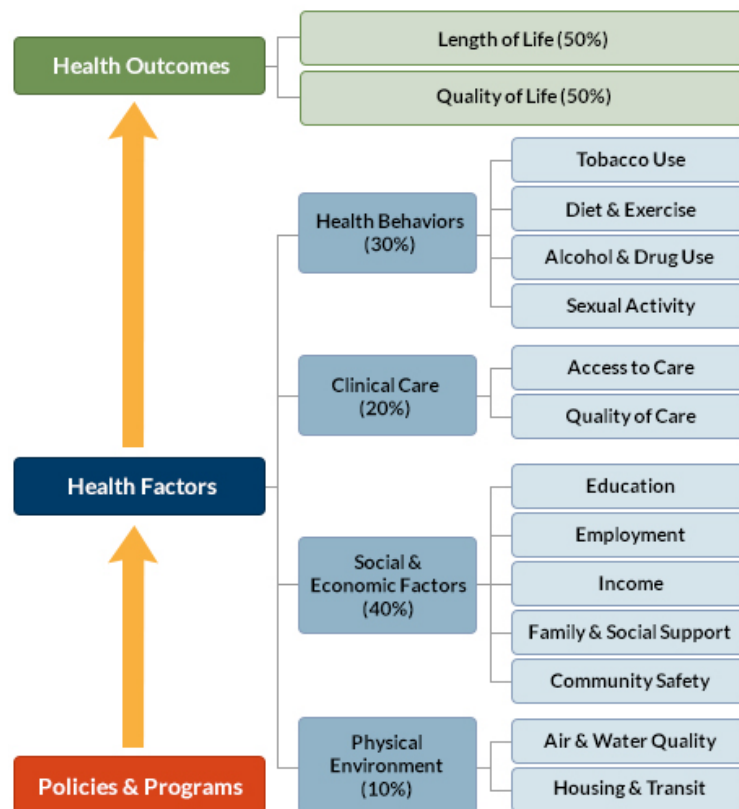
INSIDE FRONT COVER – INTENTIONALLY BLANK

INTRODUCTION

The *County Health Rankings & Roadmaps* program helps communities identify and implement solutions that make it easier for people to be healthy in their schools, workplaces, and neighborhoods. Ranking the health of nearly every county in the nation, the *County Health Rankings* illustrate *what we know* when it comes to what is making people sick or healthy. The *Roadmaps* show *what we can do* to create healthier places to live, learn, work, and play. The Robert Wood Johnson Foundation (RWJF) collaborates with the University of Wisconsin Population Health Institute (UWPHI) to bring this program to cities, counties, and states across the nation.

WHAT ARE THE COUNTY HEALTH RANKINGS?

The *County Health Rankings* measure the health of nearly every county in the nation. Published online at countyhealthrankings.org, the *Rankings* help counties understand what influences how healthy residents are and how long they will live. The *Rankings* look at a variety of measures that affect health, such as high school graduation rates, access to healthy foods, rates of smoking, obesity, and teen births. Based on data available for each county, the *Rankings* are unique in their ability to measure the overall health of each county in all 50 states. They have been used to garner support for local health improvement initiatives among government agencies, healthcare providers, community organizations, business leaders, policy makers, and the public.



HOW ARE PEOPLE USING THE RANKINGS?

- Ø Highlighting community success
- Ø Identifying root causes of poor health
- Ø Supporting policy change
- Ø Engaging communities in health improvement

For more information, visit countyhealthrankings.org

WHAT ARE THE ROADMAPS TO HEALTH?

The *Roadmaps to Health* help communities bring people together to look at the many factors that influence health, select strategies that work, and make changes that will have a lasting impact. The *Roadmaps* focus on helping communities determine what they can do and what they can learn from others.

What You Can Do

The *Roadmaps to Health* Action Center provides step-by-step guides, tools, and webinars to help groups working to improve the health of their communities. Community Coaches also provide customized consultation to local communities that have demonstrated a willingness to address factors that we know influence health, such as education, income, and community safety.

The Action Center also features *What Works for Health* – a searchable database of evidence-informed policies and programs that can improve health.

Learning From Others

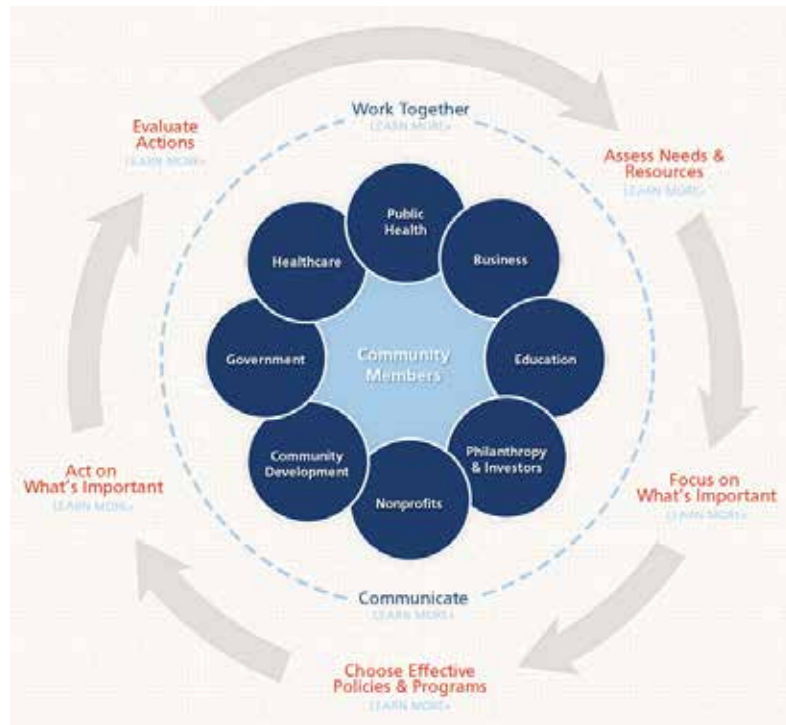
Honoring the efforts of communities working at the forefront of health improvement, the Robert Wood

Johnson Foundation annually awards the *RWJF Culture of Health Prize* to outstanding communities that are working toward better health. The *Prize* recognizes communities with strong and diverse partnerships that are coming together with a shared vision and commitment to address multiple factors that affect health and make lasting changes that create a culture of health for all. Visit countyhealthrankings.org or rwjf.org/prize to learn about the work of past prize winners.

At countyhealthrankings.org, we also feature stories from communities across the nation who have used data from the *County Health Rankings* or have engaged in strategies to improve health. For example, you can learn from the successes and challenges of the 30 *Roadmaps to Health* Community Grantees. These grantees are working to create positive policy or systems changes that address social and economic factors that influence how healthy people are and how long they live, such as education and community safety. You might also want to contact your local affiliate of United Way Worldwide, the National Business Coalition on Health, or the National Association of Counties - their national parent organizations have partnered with us to raise awareness and stimulate action to improve health in their local members' communities.

How can you get involved?

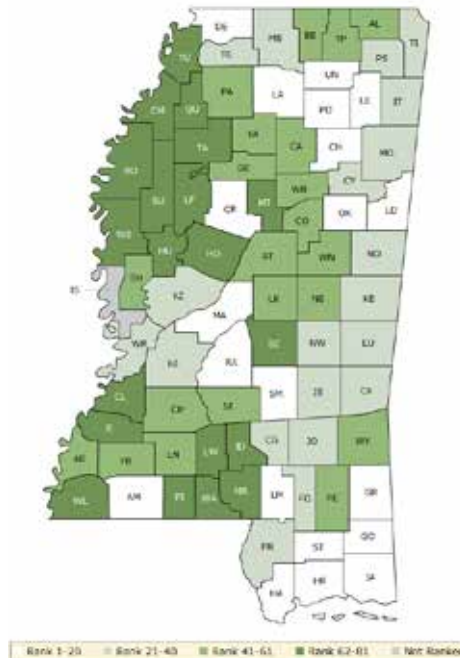
In communities large and small, people from all walks of life are taking ownership and action to improve health. Visit countyhealthrankings.org to get ideas and guidance on how you can take action in your community. Working with others, you can improve the health of your community.



The green map below shows the distribution of Mississippi's **health outcomes**, based on an equal weighting of length and quality of life.

Lighter colors indicate better performance in the respective summary rankings. Detailed information on the underlying measures is available on our web site.

HEALTH OUTCOMES RANKS

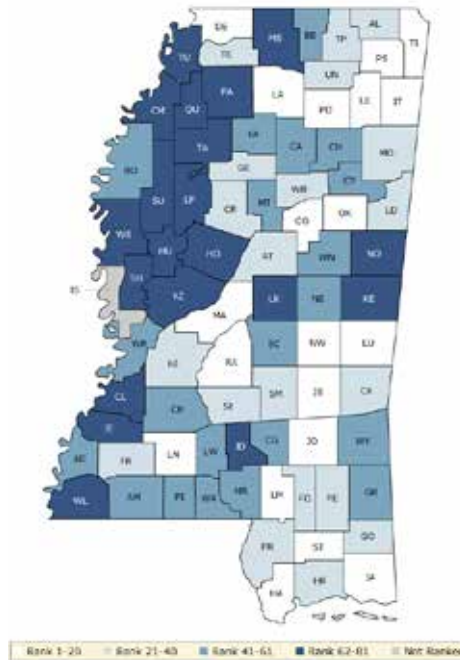


County	Rank	County	Rank	County	Rank	County	Rank
Adams	58	Grenada	45	Lincoln	41	Simpson	53
Alcorn	44	Hancock	10	Lowndes	15	Smith	19
Amite	16	Harrison	14	Madison	5	Stone	17
Attala	61	Hinds	35	Marion	72	Sunflower	73
Benton	42	Holmes	77	Marshall	34	Tallahatchie	75
Bolivar	70	Humphreys	79	Monroe	28	Tate	29
Calhoun	43	Issaquena	NR	Montgomery	68	Tippah	49
Carroll	7	Itawamba	40	Neshoba	47	Tishomingo	33
Chickasaw	18	Jackson	12	Newton	24	Tunica	76
Choctaw	46	Jasper	26	Noxubee	21	Union	9
Claiborne	69	Jefferson	71	Oktibbeha	6	Walthall	62
Clarke	37	Jefferson Davis	63	Panola	48	Warren	32
Clay	31	Jones	22	Pearl River	39	Washington	67
Coahoma	80	Kemper	36	Perry	59	Wayne	50
Copiah	56	Lafayette	3	Pike	74	Webster	54
Covington	38	Lamar	2	Pontotoc	11	Wilkinson	78
DeSoto	1	Lauderdale	23	Prentiss	25	Winston	60
Forrest	27	Lawrence	66	Quitman	81	Yalobusha	57
Franklin	51	Leake	52	Rankin	4	Yazoo	30
George	20	Lee	13	Scott	65		
Greene	8	Leflore	64	Sharkey	55		

The blue map displays Mississippi's summary ranks for **health factors**, based on weighted scores for health behaviors, clinical care, social and economic factors, and the physical environment.

Lighter colors indicate better performance in the respective summary rankings. Detailed information on the underlying measures is available on our web site.

HEALTH FACTORS RANKS



County	Rank	County	Rank	County	Rank	County	Rank
Adams	46	Grenada	38	Lincoln	8	Simpson	35
Alcorn	26	Hancock	10	Lowndes	25	Smith	21
Amite	53	Harrison	28	Madison	1	Stone	18
Attala	33	Hinds	27	Marion	55	Sunflower	78
Benton	60	Holmes	79	Marshall	76	Tallahatchie	64
Bolivar	56	Humphreys	75	Monroe	29	Tate	34
Calhoun	41	Issaquena	NR	Montgomery	48	Tippah	36
Carroll	23	Itawamba	13	Neshoba	42	Tishomingo	19
Chickasaw	47	Jackson	14	Newton	12	Tunica	80
Choctaw	9	Jasper	20	Noxubee	69	Union	22
Claiborne	68	Jefferson	71	Oktibbeha	7	Walthall	50
Clarke	32	Jefferson Davis	62	Panola	65	Warren	52
Clay	61	Jones	15	Pearl River	39	Washington	77
Coahoma	74	Kemper	66	Perry	40	Wayne	59
Copiah	57	Lafayette	4	Pike	49	Webster	30
Covington	43	Lamar	2	Pontotoc	11	Wilkinson	63
DeSoto	5	Lauderdale	16	Prentiss	17	Winston	51
Forrest	24	Lawrence	45	Quitman	81	Yalobusha	54
Franklin	37	Leake	67	Rankin	3	Yazoo	70
George	31	Lee	6	Scott	58		
Greene	44	Leflore	73	Sharkey	72		

Summary Health Outcomes & Health Factors Rankings

Counties receive two ranks:

- Health Outcomes
- Health Factors

Each of these ranks represents a weighted summary of a number of measures.

Health outcomes represent how healthy a county is while health factors represent what influences the health of the county.

Rank	Health Outcomes	Rank	Health Factors
1	DeSoto	1	Madison
2	Lamar	2	Lamar
3	Lafayette	3	Rankin
4	Rankin	4	Lafayette
5	Madison	5	DeSoto
6	Oktibbeha	6	Lee
7	Carroll	7	Oktibbeha
8	Greene	8	Lincoln
9	Union	9	Choctaw
10	Hancock	10	Hancock
11	Pontotoc	11	Pontotoc
12	Jackson	12	Newton
13	Lee	13	Itawamba
14	Harrison	14	Jackson
15	Lowndes	15	Jones
16	Amite	16	Lauderdale
17	Stone	17	Prentiss
18	Chickasaw	18	Stone
19	Smith	19	Tishomingo
20	George	20	Jasper
21	Noxubee	21	Smith
22	Jones	22	Union
23	Lauderdale	23	Carroll
24	Newton	24	Forrest
25	Prentiss	25	Lowndes
26	Jasper	26	Alcorn
27	Forrest	27	Hinds
28	Monroe	28	Harrison
29	Tate	29	Monroe
30	Yazoo	30	Webster
31	Clay	31	George
32	Warren	32	Clarke
33	Tishomingo	33	Attala
34	Marshall	34	Tate
35	Hinds	35	Simpson
36	Kemper	36	Tippah
37	Clarke	37	Franklin
38	Covington	38	Grenada
39	Pearl River	39	Pearl River
40	Itawamba	40	Perry

Rank	Health Outcomes	Rank	Health Factors
41	Lincoln	41	Calhoun
42	Benton	42	Neshoba
43	Calhoun	43	Covington
44	Alcorn	44	Greene
45	Grenada	45	Lawrence
46	Choctaw	46	Adams
47	Neshoba	47	Chickasaw
48	Panola	48	Montgomery
49	Tippah	49	Pike
50	Wayne	50	Walthall
51	Franklin	51	Winston
52	Leake	52	Warren
53	Simpson	53	Amite
54	Webster	54	Yalobusha
55	Sharkey	55	Marion
56	Copiah	56	Bolivar
57	Yalobusha	57	Copiah
58	Adams	58	Scott
59	Perry	59	Wayne
60	Winston	60	Benton
61	Attala	61	Clay
62	Walthall	62	Jefferson Davis
63	Jefferson Davis	63	Wilkinson
64	Leflore	64	Tallahatchie
65	Scott	65	Panola
66	Lawrence	66	Kemper
67	Washington	67	Leake
68	Montgomery	68	Claiborne
69	Claiborne	69	Noxubee
70	Bolivar	70	Yazoo
71	Jefferson	71	Jefferson
72	Marion	72	Sharkey
73	Sunflower	73	Leflore
74	Pike	74	Coahoma
75	Tallahatchie	75	Humphreys
76	Tunica	76	Marshall
77	Holmes	77	Washington
78	Wilkinson	78	Sunflower
79	Humphreys	79	Holmes
80	Coahoma	80	Tunica
81	Quitman	81	Quitman

Not Ranked: Issaquena

2014 County Health Rankings: Measures, Data Sources, and Years of Data

	Measure	Data Source	Years of Data
HEALTH OUTCOMES			
Length of Life	Premature death	National Center for Health Statistics	2008-2010
Quality of Life	Poor or fair health	Behavioral Risk Factor Surveillance System	2006-2012
	Poor physical health days	Behavioral Risk Factor Surveillance System	2006-2012
	Poor mental health days	Behavioral Risk Factor Surveillance System	2006-2012
	Low birthweight	National Center for Health Statistics	2005-2011
HEALTH FACTORS			
HEALTH BEHAVIORS			
Tobacco Use	Adult smoking	Behavioral Risk Factor Surveillance System	2006-2012
Diet and Exercise	Adult obesity	National Center for Chronic Disease Prevention and Health Promotion	2010
	Food environment index	USDA Food Environment Atlas, Map the Meal Gap	2010-2011
	Physical inactivity	National Center for Chronic Disease Prevention and Health Promotion	2010
	Access to exercise opportunities	OneSource Global Business Browser, Delorme map data, ESRI, & US Census Tigerline Files	2010 & 2012
Alcohol and Drug Use	Excessive drinking	Behavioral Risk Factor Surveillance System	2006-2012
	Alcohol-impaired driving deaths	Fatality Analysis Reporting System	2008-2012
Sexual Activity	Sexually transmitted infections	National Center for HIV/AIDS, Viral Hepatitis, STD, and TB prevention	2011
	Teen births	National Center for Health Statistics	2005-2011
CLINICAL CARE			
Access to Care	Uninsured	Small Area Health Insurance Estimates	2011
	Primary care physicians	HRSA Area Resource File	2011
	Dentists	HRSA Area Resource File	2012
	Mental health providers	CMS, National Provider Identification	2013
Quality of Care	Preventable hospital stays	Medicare/Dartmouth Institute	2011
	Diabetic screening	Medicare/Dartmouth Institute	2011
	Mammography screening	Medicare/Dartmouth Institute	2011
SOCIAL AND ECONOMIC FACTORS			
Education	High school graduation	data.gov, supplemented with National Center for Education Statistics	2010-2011
	Some college	American Community Survey	2008-2012
Employment	Unemployment	Bureau of Labor Statistics	2012
Income	Children in poverty	Small Area Income and Poverty Estimates	2012
Family and Social Support	Inadequate social support	Behavioral Risk Factor Surveillance System	2005-2010
	Children in single-parent households	American Community Survey	2008-2012
Community Safety	Violent crime	Uniform Crime Reporting - FBI	2009-2011
	Injury deaths	CDC WONDER	2006-2010
PHYSICAL ENVIRONMENT			
Air and Water Quality	Air pollution - particulate matter ¹	CDC WONDER	2011
	Drinking water violations	Safe Drinking Water Information System	FY 2012-2013
Housing and Transit	Severe housing problems	HUD, Comprehensive Housing Affordability Strategy	2006-2010
	Driving alone to work	American Community Survey	2008-2012
	Long commute – driving alone	American Community Survey	2008-2012

¹ Not available for AK and HI.

CREDITS

Report Authors

University of Wisconsin-Madison
School of Medicine and Public Health
Department of Population Health Sciences
Population Health Institute

Bridget Catlin, PhD, MHSA
Amanda Jovaag, MS
Julie Willems Van Dijk, PhD, RN
Patrick Remington, MD, MPH

This publication would not have been possible without the following contributions:

Data

Centers for Disease Control and Prevention: National Center for Health Statistics and Division of Behavioral Surveillance
Dartmouth Institute for Health Policy & Clinical Practice

Research Assistance

Jennifer Buechner
Hyojun Park, MA
Elizabeth Pollock
Jennifer Robinson
Matthew Rodock, MPH
Anne Roubal, MS

Communications and Outreach

Burness Communications
Alison Bergum, MPA
Matthew Call
Kate Konkle, MPH
Kitty Jerome, MA
Karen Odegaard, MPH
Jan O'Neill, MPA

Design

Forum One, Alexandria, VA

Robert Wood Johnson Foundation

Abbey Cofsky, MPH – Senior Program Officer
Michelle Larkin, JD, MS, RN – Assistant Vice-President, Program Portfolios
Marjorie Paloma, MPH – Senior Policy Advisor
James S. Marks, MD, MPH – Senior Vice-President and Director, Program Portfolios
Joe Marx – Senior Communications Officer

Suggested citation: University of Wisconsin Population Health Institute. *County Health Rankings 2014*.

INSIDE BACK COVER – INTENTIONALLY BLANK

County Health Rankings & Roadmaps

Building a Culture of Health, County by County

countyhealthrankings.org



University of Wisconsin Population Health Institute
610 Walnut St, #524, Madison, WI 53726
(608) 265-8240 / info@countyhealthrankings.org

