

**County Health
Rankings & Roadmaps**

Building a Culture of Health, County by County

A Robert Wood Johnson Foundation program

2014 *Rankings* Montana



A collaboration between the Robert Wood Johnson Foundation and the University of Wisconsin Population Health Institute.



Support provided by

Robert Wood Johnson
Foundation



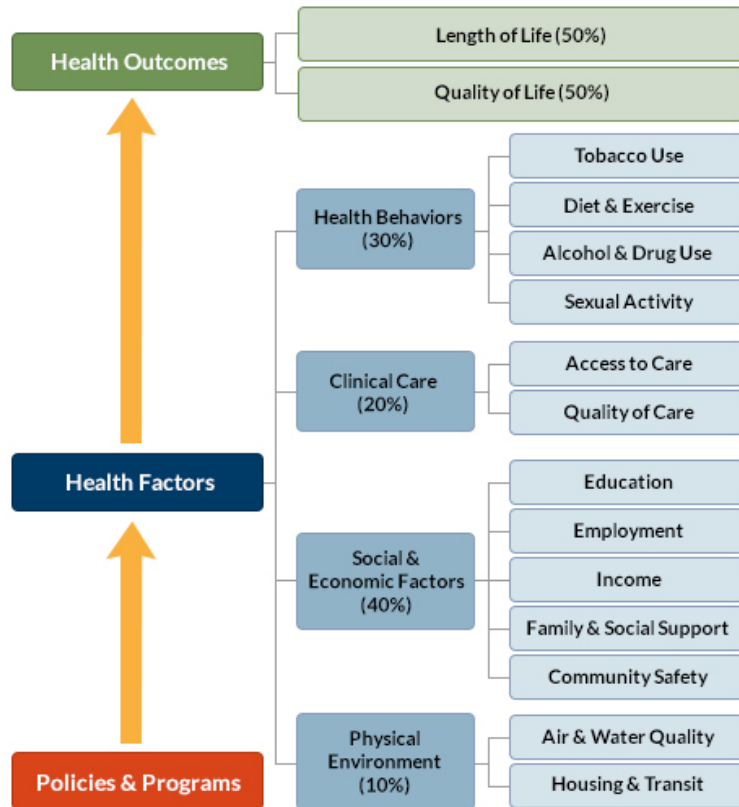
INSIDE FRONT COVER – INTENTIONALLY BLANK

INTRODUCTION

The *County Health Rankings & Roadmaps* program helps communities identify and implement solutions that make it easier for people to be healthy in their schools, workplaces, and neighborhoods. Ranking the health of nearly every county in the nation, the *County Health Rankings* illustrate *what we know* when it comes to what is making people sick or healthy. The *Roadmaps* show *what we can do* to create healthier places to live, learn, work, and play. The Robert Wood Johnson Foundation (RWJF) collaborates with the University of Wisconsin Population Health Institute (UWPHI) to bring this program to cities, counties, and states across the nation.

WHAT ARE THE COUNTY HEALTH RANKINGS?

The *County Health Rankings* measure the health of nearly every county in the nation. Published online at countyhealthrankings.org, the *Rankings* help counties understand what influences how healthy residents are and how long they will live. The *Rankings* look at a variety of measures that affect health, such as high school graduation rates, access to healthy foods, rates of smoking, obesity, and teen births. Based on data available for each county, the *Rankings* are unique in their ability to measure the overall health of each county in all 50 states. They have been used to garner support for local health improvement initiatives among government agencies, healthcare providers, community organizations, business leaders, policy makers, and the public.



HOW ARE PEOPLE USING THE RANKINGS?

- Ø Highlighting community success
- Ø Identifying root causes of poor health
- Ø Supporting policy change
- Ø Engaging communities in health improvement

For more information, visit countyhealthrankings.org

WHAT ARE THE ROADMAPS TO HEALTH?

The *Roadmaps to Health* help communities bring people together to look at the many factors that influence health, select strategies that work, and make changes that will have a lasting impact. The *Roadmaps* focus on helping communities determine what they can do and what they can learn from others.

What You Can Do

The *Roadmaps to Health* Action Center provides step-by-step guides, tools, and webinars to help groups working to improve the health of their communities. Community Coaches also provide customized consultation to local communities that have demonstrated a willingness to address factors that we know influence health, such as education, income, and community safety.

The Action Center also features *What Works for Health* – a searchable database of evidence-informed policies and programs that can improve health.

Learning From Others

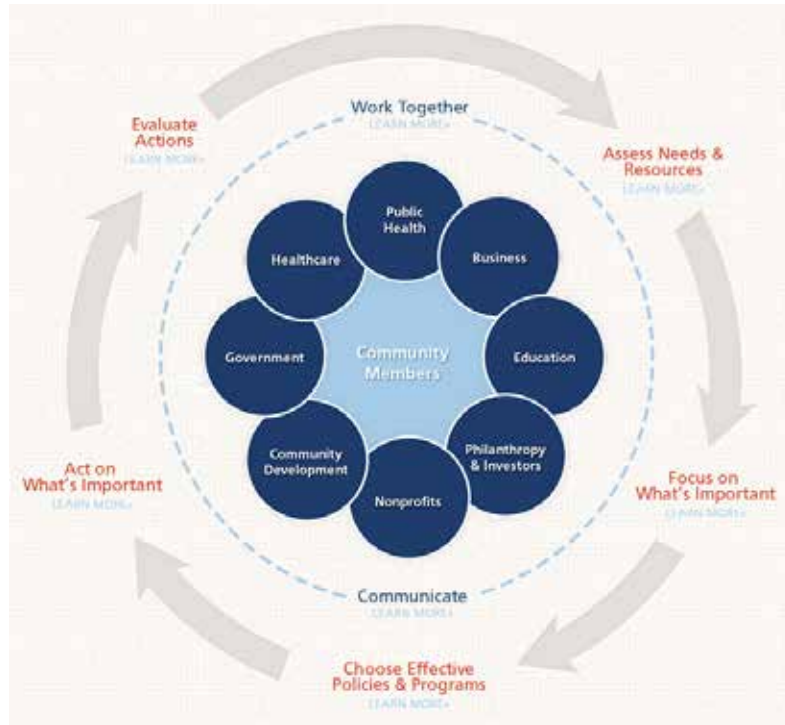
Honoring the efforts of communities working at the forefront of health improvement, the Robert Wood

Johnson Foundation annually awards the *RWJF Culture of Health Prize* to outstanding communities that are working toward better health. The *Prize* recognizes communities with strong and diverse partnerships that are coming together with a shared vision and commitment to address multiple factors that affect health and make lasting changes that create a culture of health for all. Visit countyhealthrankings.org or rwjf.org/prize to learn about the work of past prize winners.

At countyhealthrankings.org, we also feature stories from communities across the nation who have used data from the *County Health Rankings* or have engaged in strategies to improve health. For example, you can learn from the successes and challenges of the 30 *Roadmaps to Health* Community Grantees. These grantees are working to create positive policy or systems changes that address social and economic factors that influence how healthy people are and how long they live, such as education and community safety. You might also want to contact your local affiliate of United Way Worldwide, the National Business Coalition on Health, or the National Association of Counties - their national parent organizations have partnered with us to raise awareness and stimulate action to improve health in their local members' communities.

How can you get involved?

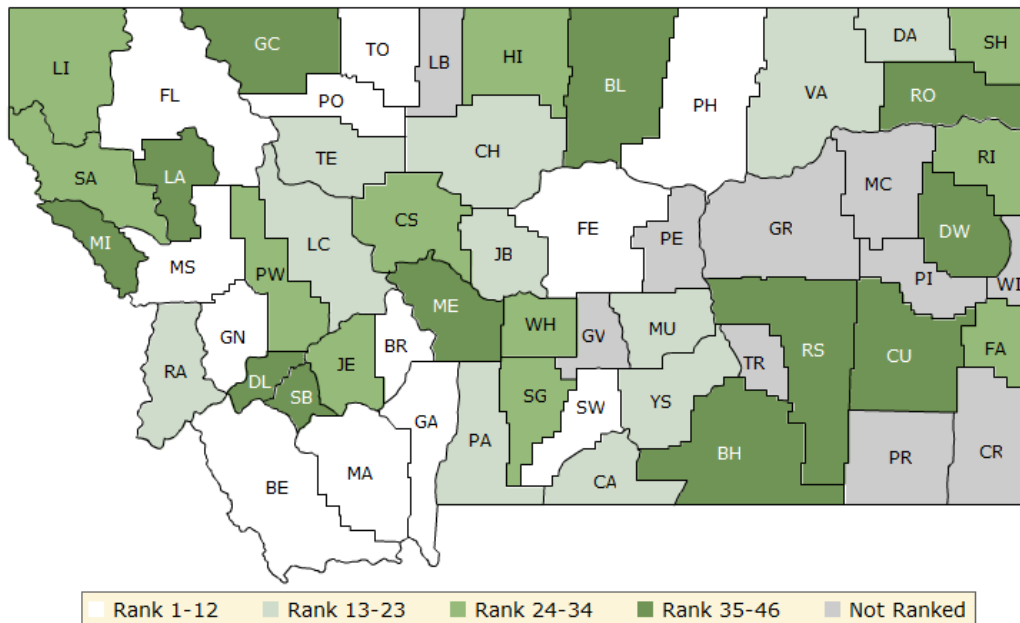
In communities large and small, people from all walks of life are taking ownership and action to improve health. Visit countyhealthrankings.org to get ideas and guidance on how you can take action in your community. Working with others, you can improve the health of your community.



The green map below shows the distribution of Montana's **health outcomes**, based on an equal weighting of length and quality of life.

Lighter colors indicate better performance in the respective summary rankings. Detailed information on the underlying measures is available on our web site.

HEALTH OUTCOMES RANKS

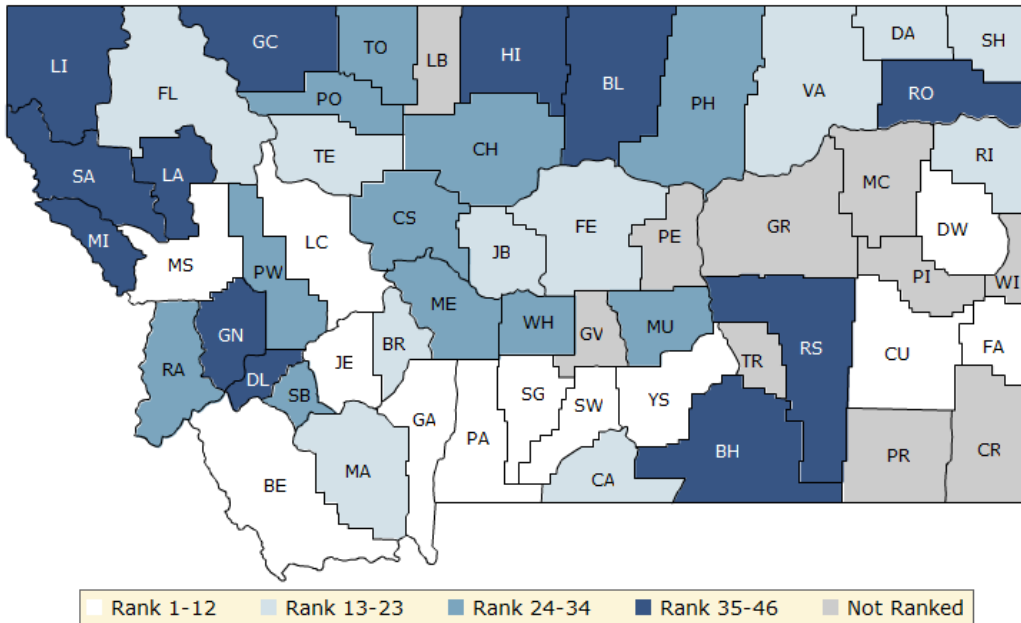


County	Rank	County	Rank	County	Rank	County	Rank
Beaverhead	9	Flathead	8	McCone	NR	Roosevelt	46
Big Horn	42	Gallatin	1	Meagher	38	Rosebud	40
Blaine	44	Garfield	NR	Mineral	41	Sanders	31
Broadwater	4	Glacier	45	Missoula	6	Sheridan	32
Carbon	17	Golden Valley	NR	Musselshell	19	Silver Bow	39
Carter	NR	Granite	2	Park	14	Stillwater	11
Cascade	27	Hill	34	Petroleum	NR	Sweet Grass	25
Chouteau	20	Jefferson	24	Phillips	12	Teton	18
Custer	37	Judith Basin	13	Pondera	10	Toole	7
Daniels	21	Lake	36	Powder River	NR	Treasure	NR
Dawson	35	Lewis and Clark	23	Powell	29	Valley	16
Deer Lodge	43	Liberty	NR	Prairie	NR	Wheatland	28
Fallon	30	Lincoln	33	Ravalli	15	Wibaux	NR
Fergus	5	Madison	3	Richland	26	Yellowstone	22

The blue map displays Montana’s summary ranks for **health factors**, based on weighted scores for health behaviors, clinical care, social and economic factors, and the physical environment.

Lighter colors indicate better performance in the respective summary rankings. Detailed information on the underlying measures is available on our web site.

HEALTH FACTORS RANKS



County	Rank	County	Rank	County	Rank	County	Rank
Beaverhead	4	Flathead	23	McCone	NR	Roosevelt	44
Big Horn	45	Gallatin	1	Meagher	34	Rosebud	38
Blaine	43	Garfield	NR	Mineral	39	Sanders	42
Broadwater	21	Glacier	46	Missoula	5	Sheridan	13
Carbon	17	Golden Valley	NR	Musselshell	30	Silver Bow	28
Carter	NR	Granite	35	Park	9	Stillwater	8
Cascade	24	Hill	41	Petroleum	NR	Sweet Grass	7
Chouteau	27	Jefferson	2	Phillips	31	Teton	22
Custer	10	Judith Basin	15	Pondera	33	Toole	26
Daniels	14	Lake	40	Powder River	NR	Treasure	NR
Dawson	11	Lewis and Clark	3	Powell	29	Valley	20
Deer Lodge	37	Liberty	NR	Prairie	NR	Wheatland	32
Fallon	6	Lincoln	36	Ravalli	25	Wibaux	NR
Fergus	19	Madison	18	Richland	16	Yellowstone	12

Summary Health Outcomes & Health Factors Rankings

Counties receive two ranks:

- Health Outcomes
- Health Factors

Each of these ranks represents a weighted summary of a number of measures.

Health outcomes represent how healthy a county is while health factors represent what influences the health of the county.

Rank	Health Outcomes	Rank	Health Factors
1	Gallatin	1	Gallatin
2	Granite	2	Jefferson
3	Madison	3	Lewis and Clark
4	Broadwater	4	Beaverhead
5	Fergus	5	Missoula
6	Missoula	6	Fallon
7	Toole	7	Sweet Grass
8	Flathead	8	Stillwater
9	Beaverhead	9	Park
10	Pondera	10	Custer
11	Stillwater	11	Dawson
12	Phillips	12	Yellowstone
13	Judith Basin	13	Sheridan
14	Park	14	Daniels
15	Ravalli	15	Judith Basin
16	Valley	16	Richland
17	Carbon	17	Carbon
18	Teton	18	Madison
19	Musselshell	19	Fergus
20	Chouteau	20	Valley
21	Daniels	21	Broadwater
22	Yellowstone	22	Teton
23	Lewis and Clark	23	Flathead
24	Jefferson	24	Cascade
25	Sweet Grass	25	Ravalli
26	Richland	26	Toole
27	Cascade	27	Chouteau
28	Wheatland	28	Silver Bow
29	Powell	29	Powell
30	Fallon	30	Musselshell
31	Sanders	31	Phillips
32	Sheridan	32	Wheatland
33	Lincoln	33	Pondera
34	Hill	34	Meagher
35	Dawson	35	Granite
36	Lake	36	Lincoln
37	Custer	37	Deer Lodge
38	Meagher	38	Rosebud
39	Silver Bow	39	Mineral
40	Rosebud	40	Lake

Rank	Health Outcomes	Rank	Health Factors
41	Mineral	41	Hill
42	Big Horn	42	Sanders
43	Deer Lodge	43	Blaine
44	Blaine	44	Roosevelt
45	Glacier	45	Big Horn
46	Roosevelt	46	Glacier

Not Ranked: Carter, Garfield, Golden Valley, Liberty, McCone, Petroleum, Powder River, Prairie, Treasure, Wibaux

2014 County Health Rankings: Measures, Data Sources, and Years of Data

	Measure	Data Source	Years of Data
HEALTH OUTCOMES			
Length of Life	Premature death	National Center for Health Statistics	2008-2010
Quality of Life	Poor or fair health	Behavioral Risk Factor Surveillance System	2006-2012
	Poor physical health days	Behavioral Risk Factor Surveillance System	2006-2012
	Poor mental health days	Behavioral Risk Factor Surveillance System	2006-2012
	Low birthweight	National Center for Health Statistics	2005-2011
HEALTH FACTORS			
HEALTH BEHAVIORS			
Tobacco Use	Adult smoking	Behavioral Risk Factor Surveillance System	2006-2012
Diet and Exercise	Adult obesity	National Center for Chronic Disease Prevention and Health Promotion	2010
	Food environment index	USDA Food Environment Atlas, Map the Meal Gap	2010-2011
	Physical inactivity	National Center for Chronic Disease Prevention and Health Promotion	2010
	Access to exercise opportunities	OneSource Global Business Browser, Delorme map data, ESRI, & US Census Tigerline Files	2010 & 2012
Alcohol and Drug Use	Excessive drinking	Behavioral Risk Factor Surveillance System	2006-2012
	Alcohol-impaired driving deaths	Fatality Analysis Reporting System	2008-2012
Sexual Activity	Sexually transmitted infections	National Center for HIV/AIDS, Viral Hepatitis, STD, and TB prevention	2011
	Teen births	National Center for Health Statistics	2005-2011
CLINICAL CARE			
Access to Care	Uninsured	Small Area Health Insurance Estimates	2011
	Primary care physicians	HRSA Area Resource File	2011
	Dentists	HRSA Area Resource File	2012
	Mental health providers	CMS, National Provider Identification	2013
Quality of Care	Preventable hospital stays	Medicare/Dartmouth Institute	2011
	Diabetic screening	Medicare/Dartmouth Institute	2011
	Mammography screening	Medicare/Dartmouth Institute	2011
SOCIAL AND ECONOMIC FACTORS			
Education	High school graduation	data.gov, supplemented with National Center for Education Statistics	2010-2011
	Some college	American Community Survey	2008-2012
Employment	Unemployment	Bureau of Labor Statistics	2012
Income	Children in poverty	Small Area Income and Poverty Estimates	2012
Family and Social Support	Inadequate social support	Behavioral Risk Factor Surveillance System	2005-2010
	Children in single-parent households	American Community Survey	2008-2012
Community Safety	Violent crime	Uniform Crime Reporting - FBI	2009-2011
	Injury deaths	CDC WONDER	2006-2010
PHYSICAL ENVIRONMENT			
Air and Water Quality	Air pollution - particulate matter ¹	CDC WONDER	2011
	Drinking water violations	Safe Drinking Water Information System	FY 2012-2013
Housing and Transit	Severe housing problems	HUD, Comprehensive Housing Affordability Strategy	2006-2010
	Driving alone to work	American Community Survey	2008-2012
	Long commute – driving alone	American Community Survey	2008-2012

¹ Not available for AK and HI.

CREDITS

Report Authors

University of Wisconsin-Madison
School of Medicine and Public Health
Department of Population Health Sciences
Population Health Institute

Bridget Catlin, PhD, MHSA
Amanda Jovaag, MS
Julie Willems Van Dijk, PhD, RN
Patrick Remington, MD, MPH

This publication would not have been possible without the following contributions:

Data

Centers for Disease Control and Prevention: National Center for Health Statistics and Division of Behavioral Surveillance
Dartmouth Institute for Health Policy & Clinical Practice

Research Assistance

Jennifer Buechner
Hyojun Park, MA
Elizabeth Pollock
Jennifer Robinson
Matthew Rodock, MPH
Anne Roubal, MS

Communications and Outreach

Burness Communications
Alison Bergum, MPA
Matthew Call
Kate Konkle, MPH
Kitty Jerome, MA
Karen Odegaard, MPH
Jan O'Neill, MPA

Design

Forum One, Alexandria, VA

Robert Wood Johnson Foundation

Abbey Cofsky, MPH – Senior Program Officer
Michelle Larkin, JD, MS, RN – Assistant Vice-President, Program Portfolios
Marjorie Paloma, MPH – Senior Policy Advisor
James S. Marks, MD, MPH – Senior Vice-President and Director, Program Portfolios
Joe Marx – Senior Communications Officer

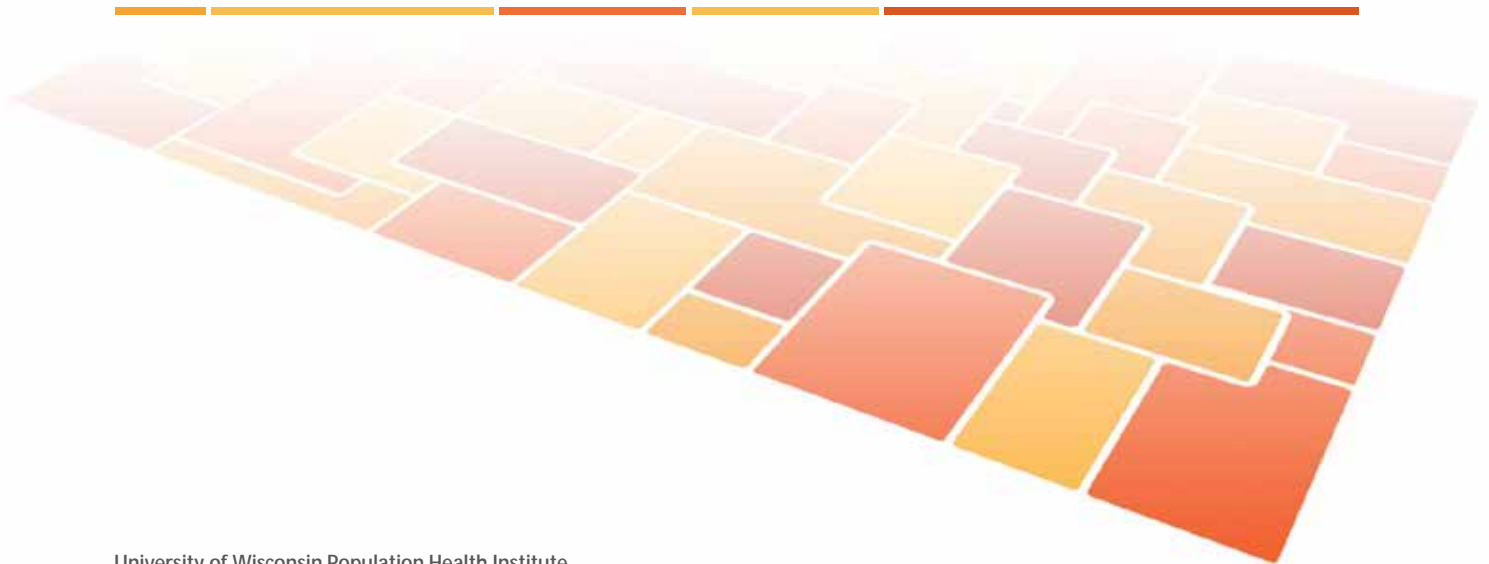
Suggested citation: University of Wisconsin Population Health Institute. *County Health Rankings 2014*.

INSIDE BACK COVER – INTENTIONALLY BLANK

County Health Rankings & Roadmaps

Building a Culture of Health, County by County

countyhealthrankings.org



University of Wisconsin Population Health Institute
610 Walnut St, #524, Madison, WI 53726
(608) 265-8240 / info@countyhealthrankings.org

