

**County Health  
Rankings & Roadmaps**

Building a Culture of Health, County by County

A Robert Wood Johnson Foundation program

# 2014 *Rankings* South Carolina



A collaboration between the Robert Wood Johnson Foundation and the University of Wisconsin Population Health Institute.



Support provided by

Robert Wood Johnson Foundation



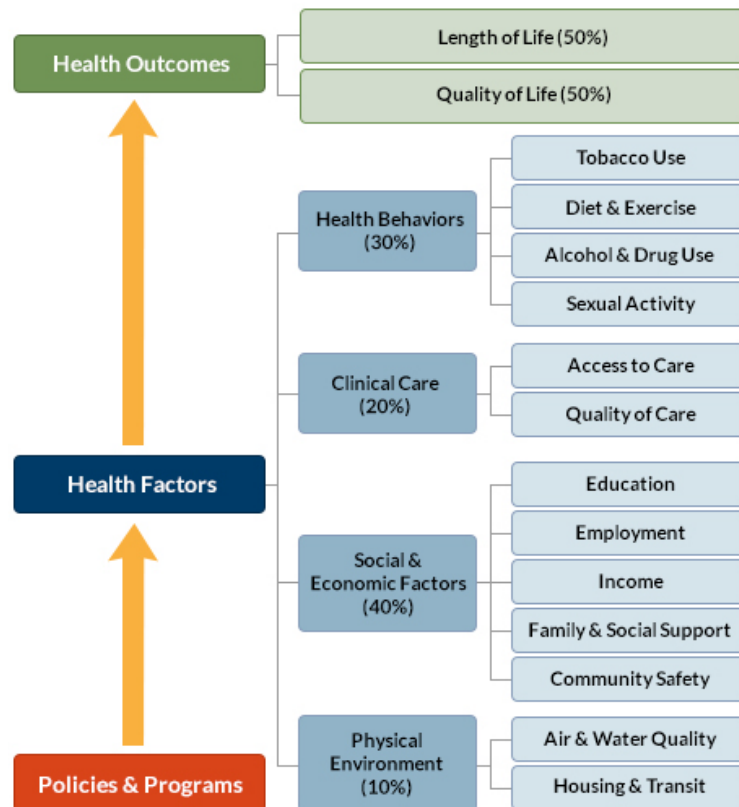
INSIDE FRONT COVER – INTENTIONALLY BLANK

## INTRODUCTION

The *County Health Rankings & Roadmaps* program helps communities identify and implement solutions that make it easier for people to be healthy in their schools, workplaces, and neighborhoods. Ranking the health of nearly every county in the nation, the *County Health Rankings* illustrate *what we know* when it comes to what is making people sick or healthy. The *Roadmaps* show *what we can do* to create healthier places to live, learn, work, and play. The Robert Wood Johnson Foundation (RWJF) collaborates with the University of Wisconsin Population Health Institute (UWPHI) to bring this program to cities, counties, and states across the nation.

## WHAT ARE THE COUNTY HEALTH RANKINGS?

The *County Health Rankings* measure the health of nearly every county in the nation. Published online at [countyhealthrankings.org](http://countyhealthrankings.org), the *Rankings* help counties understand what influences how healthy residents are and how long they will live. The *Rankings* look at a variety of measures that affect health, such as high school graduation rates, access to healthy foods, rates of smoking, obesity, and teen births. Based on data available for each county, the *Rankings* are unique in their ability to measure the overall health of each county in all 50 states. They have been used to garner support for local health improvement initiatives among government agencies, healthcare providers, community organizations, business leaders, policy makers, and the public.



## HOW ARE PEOPLE USING THE RANKINGS?

- Ø Highlighting community success
- Ø Identifying root causes of poor health
- Ø Supporting policy change
- Ø Engaging communities in health improvement

For more information, visit [countyhealthrankings.org](http://countyhealthrankings.org)

## WHAT ARE THE ROADMAPS TO HEALTH?

The *Roadmaps to Health* help communities bring people together to look at the many factors that influence health, select strategies that work, and make changes that will have a lasting impact. The *Roadmaps* focus on helping communities determine what they can do and what they can learn from others.

### What You Can Do

The *Roadmaps to Health* Action Center provides step-by-step guides, tools, and webinars to help groups working to improve the health of their communities. Community Coaches also provide customized consultation to local communities that have demonstrated a willingness to address factors that we know influence health, such as education, income, and community safety.

The Action Center also features *What Works for Health* – a searchable database of evidence-informed policies and programs that can improve health.

### Learning From Others

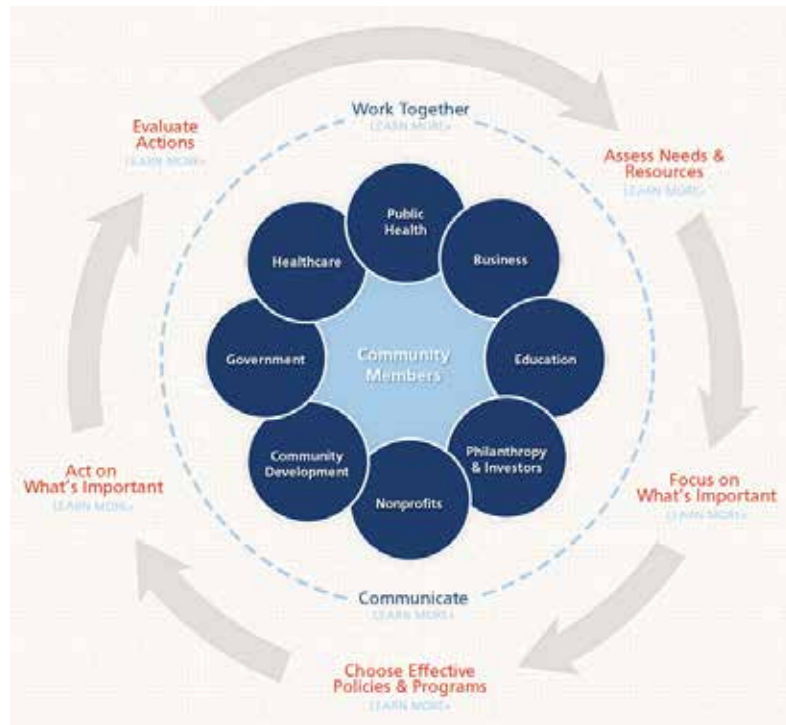
Honoring the efforts of communities working at the forefront of health improvement, the Robert Wood

Johnson Foundation annually awards the *RWJF Culture of Health Prize* to outstanding communities that are working toward better health. The *Prize* recognizes communities with strong and diverse partnerships that are coming together with a shared vision and commitment to address multiple factors that affect health and make lasting changes that create a culture of health for all. Visit [countyhealthrankings.org](http://countyhealthrankings.org) or [rwjf.org/prize](http://rwjf.org/prize) to learn about the work of past prize winners.

At [countyhealthrankings.org](http://countyhealthrankings.org), we also feature stories from communities across the nation who have used data from the *County Health Rankings* or have engaged in strategies to improve health. For example, you can learn from the successes and challenges of the 30 *Roadmaps to Health* Community Grantees. These grantees are working to create positive policy or systems changes that address social and economic factors that influence how healthy people are and how long they live, such as education and community safety. You might also want to contact your local affiliate of United Way Worldwide, the National Business Coalition on Health, or the National Association of Counties - their national parent organizations have partnered with us to raise awareness and stimulate action to improve health in their local members' communities.

## How can you get involved?

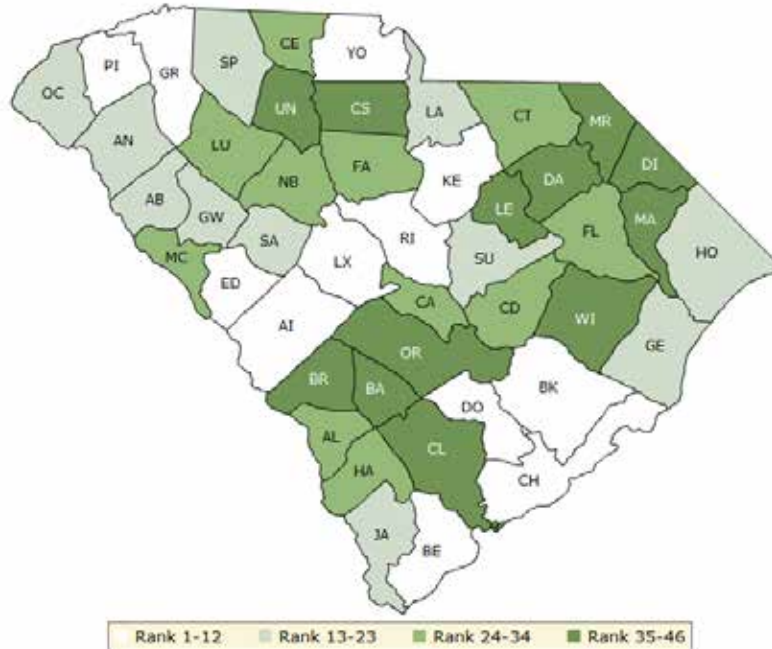
In communities large and small, people from all walks of life are taking ownership and action to improve health. Visit [countyhealthrankings.org](http://countyhealthrankings.org) to get ideas and guidance on how you can take action in your community. Working with others, you can improve the health of your community.



The green map below shows the distribution of South Carolina's **health outcomes**, based on an equal weighting of length and quality of life.

Lighter colors indicate better performance in the respective summary rankings. Detailed information on the underlying measures is available on our web site.

### HEALTH OUTCOMES RANKS

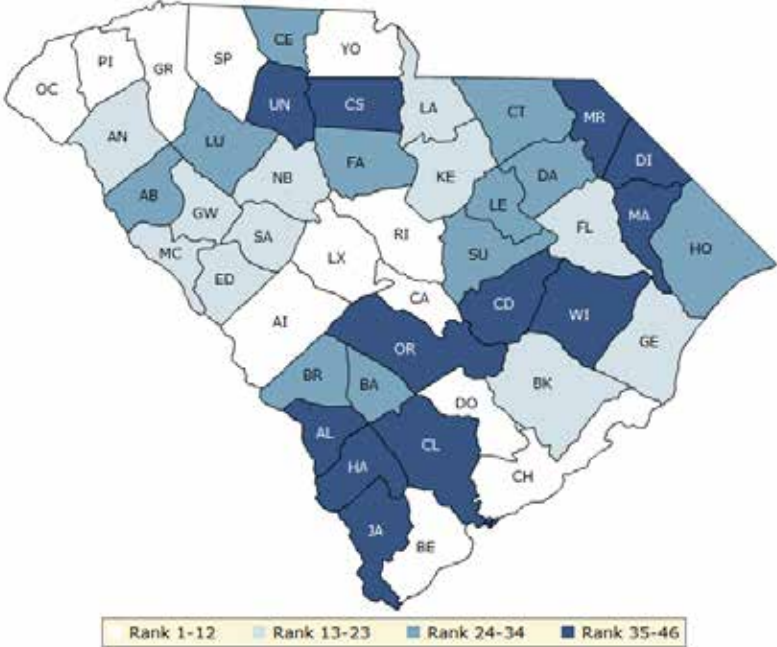


County	Rank	County	Rank	County	Rank	County	Rank
Abbeville	15	Chesterfield	33	Hampton	29	Oconee	17
Aiken	11	Clarendon	28	Horry	14	Orangeburg	40
Allendale	32	Colleton	37	Jasper	22	Pickens	12
Anderson	16	Darlington	41	Kershaw	10	Richland	9
Bamberg	44	Dillon	43	Lancaster	20	Saluda	13
Barnwell	36	Dorchester	7	Laurens	30	Spartanburg	18
Beaufort	1	Edgefield	4	Lee	42	Sumter	21
Berkeley	8	Fairfield	27	Lexington	3	Union	35
Calhoun	25	Florence	31	Marion	46	Williamsburg	39
Charleston	6	Georgetown	23	Marlboro	45	York	2
Cherokee	34	Greenville	5	McCormick	26		
Chester	38	Greenwood	19	Newberry	24		

The blue map displays South Carolina’s summary ranks for **health factors**, based on weighted scores for health behaviors, clinical care, social and economic factors, and the physical environment.

Lighter colors indicate better performance in the respective summary rankings. Detailed information on the underlying measures is available on our web site.

**HEALTH FACTORS RANKS**



County	Rank	County	Rank	County	Rank	County	Rank
Abbeville	26	Chesterfield	33	Hampton	36	Oconee	9
Aiken	10	Clarendon	35	Horry	24	Orangeburg	37
Allendale	46	Colleton	40	Jasper	44	Pickens	8
Anderson	13	Darlington	27	Kershaw	16	Richland	7
Bamberg	29	Dillon	42	Lancaster	20	Saluda	22
Barnwell	34	Dorchester	2	Laurens	30	Spartanburg	12
Beaufort	1	Edgefield	14	Lee	31	Sumter	25
Berkeley	15	Fairfield	28	Lexington	3	Union	41
Calhoun	11	Florence	17	Marion	43	Williamsburg	38
Charleston	6	Georgetown	19	Marlboro	45	York	5
Cherokee	32	Greenville	4	McCormick	18		
Chester	39	Greenwood	23	Newberry	21		

## Summary Health Outcomes & Health Factors Rankings

Counties receive two ranks:

- Health Outcomes
- Health Factors

Each of these ranks represents a weighted summary of a number of measures.

Health outcomes represent how healthy a county is while health factors represent what influences the health of the county.

Rank	Health Outcomes	Rank	Health Factors
1	Beaufort	1	Beaufort
2	York	2	Dorchester
3	Lexington	3	Lexington
4	Edgefield	4	Greenville
5	Greenville	5	York
6	Charleston	6	Charleston
7	Dorchester	7	Richland
8	Berkeley	8	Pickens
9	Richland	9	Oconee
10	Kershaw	10	Aiken
11	Aiken	11	Calhoun
12	Pickens	12	Spartanburg
13	Saluda	13	Anderson
14	Horry	14	Edgefield
15	Abbeville	15	Berkeley
16	Anderson	16	Kershaw
17	Oconee	17	Florence
18	Spartanburg	18	McCormick
19	Greenwood	19	Georgetown
20	Lancaster	20	Lancaster
21	Sumter	21	Newberry
22	Jasper	22	Saluda
23	Georgetown	23	Greenwood
24	Newberry	24	Horry
25	Calhoun	25	Sumter
26	McCormick	26	Abbeville
27	Fairfield	27	Darlington
28	Clarendon	28	Fairfield
29	Hampton	29	Bamberg
30	Laurens	30	Laurens
31	Florence	31	Lee
32	Allendale	32	Cherokee
33	Chesterfield	33	Chesterfield
34	Cherokee	34	Barnwell
35	Union	35	Clarendon
36	Barnwell	36	Hampton
37	Colleton	37	Orangeburg
38	Chester	38	Williamsburg
39	Williamsburg	39	Chester
40	Orangeburg	40	Colleton

Rank	Health Outcomes	Rank	Health Factors
41	Darlington	41	Union
42	Lee	42	Dillon
43	Dillon	43	Marion
44	Bamberg	44	Jasper
45	Marlboro	45	Marlboro
46	Marion	46	Allendale



## 2014 County Health Rankings: Measures, Data Sources, and Years of Data

	Measure	Data Source	Years of Data
<b>HEALTH OUTCOMES</b>			
<b>Length of Life</b>	Premature death	National Center for Health Statistics	2008-2010
<b>Quality of Life</b>	Poor or fair health	Behavioral Risk Factor Surveillance System	2006-2012
	Poor physical health days	Behavioral Risk Factor Surveillance System	2006-2012
	Poor mental health days	Behavioral Risk Factor Surveillance System	2006-2012
	Low birthweight	National Center for Health Statistics	2005-2011
<b>HEALTH FACTORS</b>			
<b>HEALTH BEHAVIORS</b>			
<b>Tobacco Use</b>	Adult smoking	Behavioral Risk Factor Surveillance System	2006-2012
<b>Diet and Exercise</b>	Adult obesity	National Center for Chronic Disease Prevention and Health Promotion	2010
	Food environment index	USDA Food Environment Atlas, Map the Meal Gap	2010-2011
	Physical inactivity	National Center for Chronic Disease Prevention and Health Promotion	2010
	Access to exercise opportunities	OneSource Global Business Browser, Delorme map data, ESRI, & US Census Tigerline Files	2010 & 2012
<b>Alcohol and Drug Use</b>	Excessive drinking	Behavioral Risk Factor Surveillance System	2006-2012
	Alcohol-impaired driving deaths	Fatality Analysis Reporting System	2008-2012
<b>Sexual Activity</b>	Sexually transmitted infections	National Center for HIV/AIDS, Viral Hepatitis, STD, and TB prevention	2011
	Teen births	National Center for Health Statistics	2005-2011
<b>CLINICAL CARE</b>			
<b>Access to Care</b>	Uninsured	Small Area Health Insurance Estimates	2011
	Primary care physicians	HRSA Area Resource File	2011
	Dentists	HRSA Area Resource File	2012
	Mental health providers	CMS, National Provider Identification	2013
<b>Quality of Care</b>	Preventable hospital stays	Medicare/Dartmouth Institute	2011
	Diabetic screening	Medicare/Dartmouth Institute	2011
	Mammography screening	Medicare/Dartmouth Institute	2011
<b>SOCIAL AND ECONOMIC FACTORS</b>			
<b>Education</b>	High school graduation	data.gov, supplemented with National Center for Education Statistics	2010-2011
	Some college	American Community Survey	2008-2012
<b>Employment</b>	Unemployment	Bureau of Labor Statistics	2012
<b>Income</b>	Children in poverty	Small Area Income and Poverty Estimates	2012
<b>Family and Social Support</b>	Inadequate social support	Behavioral Risk Factor Surveillance System	2005-2010
	Children in single-parent households	American Community Survey	2008-2012
<b>Community Safety</b>	Violent crime	Uniform Crime Reporting - FBI	2009-2011
	Injury deaths	CDC WONDER	2006-2010
<b>PHYSICAL ENVIRONMENT</b>			
<b>Air and Water Quality</b>	Air pollution - particulate matter <sup>1</sup>	CDC WONDER	2011
	Drinking water violations	Safe Drinking Water Information System	FY 2012-2013
<b>Housing and Transit</b>	Severe housing problems	HUD, Comprehensive Housing Affordability Strategy	2006-2010
	Driving alone to work	American Community Survey	2008-2012
	Long commute – driving alone	American Community Survey	2008-2012

<sup>1</sup> Not available for AK and HI.

CREDITS

**Report Authors**

University of Wisconsin-Madison  
School of Medicine and Public Health  
Department of Population Health Sciences  
Population Health Institute

Bridget Catlin, PhD, MHSA  
Amanda Jovaag, MS  
Julie Willems Van Dijk, PhD, RN  
Patrick Remington, MD, MPH

This publication would not have been possible without the following contributions:

***Data***

Centers for Disease Control and Prevention: National Center for Health Statistics and Division of Behavioral Surveillance  
Dartmouth Institute for Health Policy & Clinical Practice

***Research Assistance***

Jennifer Buechner  
Hyojun Park, MA  
Elizabeth Pollock  
Jennifer Robinson  
Matthew Rodock, MPH  
Anne Roubal, MS

***Communications and Outreach***

Burness Communications  
Alison Bergum, MPA  
Matthew Call  
Kate Konkle, MPH  
Kitty Jerome, MA  
Karen Odegaard, MPH  
Jan O'Neill, MPA

***Design***

Forum One, Alexandria, VA

***Robert Wood Johnson Foundation***

Abbey Cofsky, MPH – Senior Program Officer  
Michelle Larkin, JD, MS, RN – Assistant Vice-President, Program Portfolios  
Marjorie Paloma, MPH – Senior Policy Advisor  
James S. Marks, MD, MPH – Senior Vice-President and Director, Program Portfolios  
Joe Marx – Senior Communications Officer

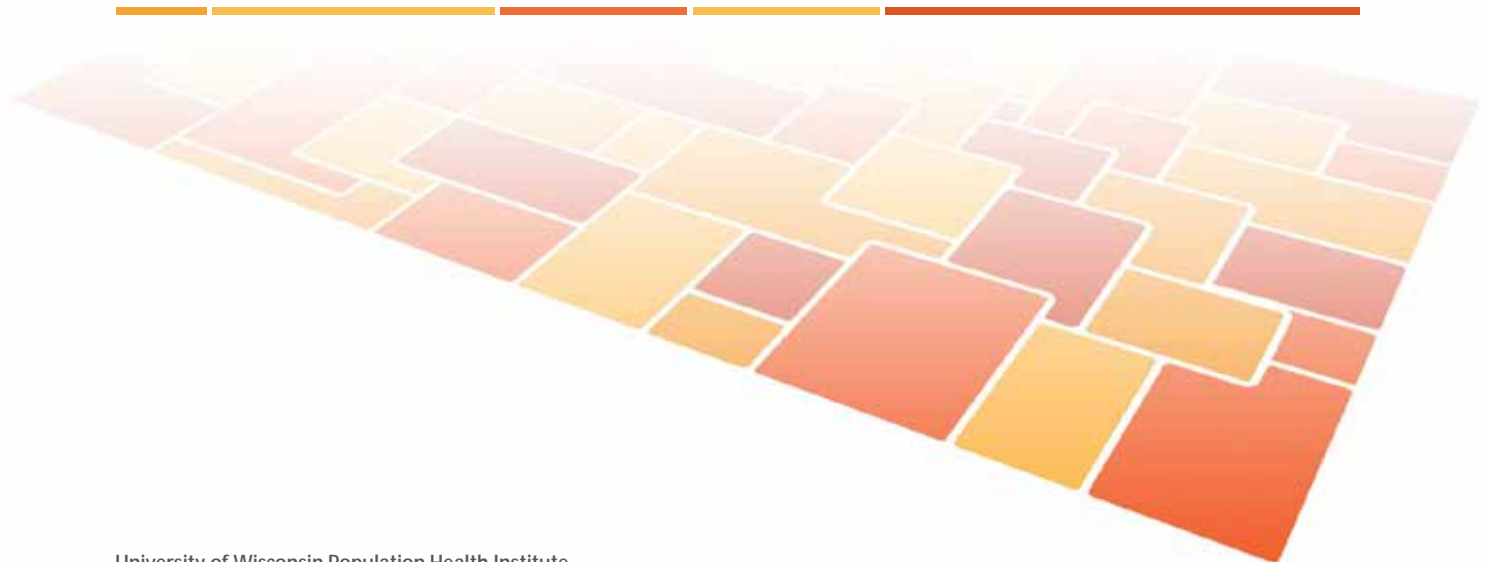
Suggested citation: University of Wisconsin Population Health Institute. *County Health Rankings 2014*.

INSIDE BACK COVER – INTENTIONALLY BLANK

# County Health Rankings & Roadmaps

Building a Culture of Health, County by County

[countyhealthrankings.org](http://countyhealthrankings.org)



University of Wisconsin Population Health Institute  
610 Walnut St, #524, Madison, WI 53726  
(608) 265-8240 / [info@countyhealthrankings.org](mailto:info@countyhealthrankings.org)

