



County Health Rankings

Mobilizing Action Toward Community Health

2011

Mississippi



Robert Wood Johnson Foundation



UNIVERSITY OF WISCONSIN

Population Health Institute

Translating Research into Policy and Practice

Introduction

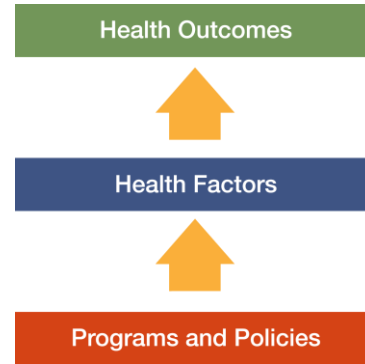
Where we live matters to our health. The health of a community depends on many different factors, including quality of health care, individual behavior, education and jobs, and the environment. We can improve a community's health through programs and policies. For example, people who live in communities with ample park and recreation space are more likely to exercise, which reduces heart disease risk. People who live in communities with smoke-free laws are less likely to smoke or to be exposed to second-hand smoke, which reduces lung cancer risk.

The problem is that there are big differences in health across communities, with some places being much healthier than others. And up to now, it has been hard to get a standard way to measure how healthy a county is and see where they can improve.

The Robert Wood Johnson Foundation and the University of Wisconsin Population Health Institute are pleased to present the 2011 *County Health Rankings*, a collection of 50 reports that reflect the overall health of counties in every state across the country. For the second year in a row, counties can get a snapshot of how healthy their residents are by comparing their overall health and the factors that influence their health with other counties in their state. This allows communities to see county-to-county where they are doing well and where they need to improve.

Everyone has a stake in community health. We all need to work together to find solutions. The *County Health Rankings* serve as both a call to action and a needed tool in this effort.

All of the *County Health Rankings* are based upon this model of population health improvement:



In this model, health outcomes are measures that describe the current health status of a county. These health outcomes are influenced by a set of health factors. These health factors and their outcomes may also be affected by community-based programs and policies designed to alter their distribution in the community. Counties can improve health outcomes by addressing all health factors with effective, evidence-based programs and policies.

To compile the *Rankings*, we built on our prior work in Wisconsin, obtained input from a team of expert advisors, and worked closely with staff from the National Center for Health Statistics. Together we selected a number of population health measures based on scientific relevance, importance, and availability of data at the county level.

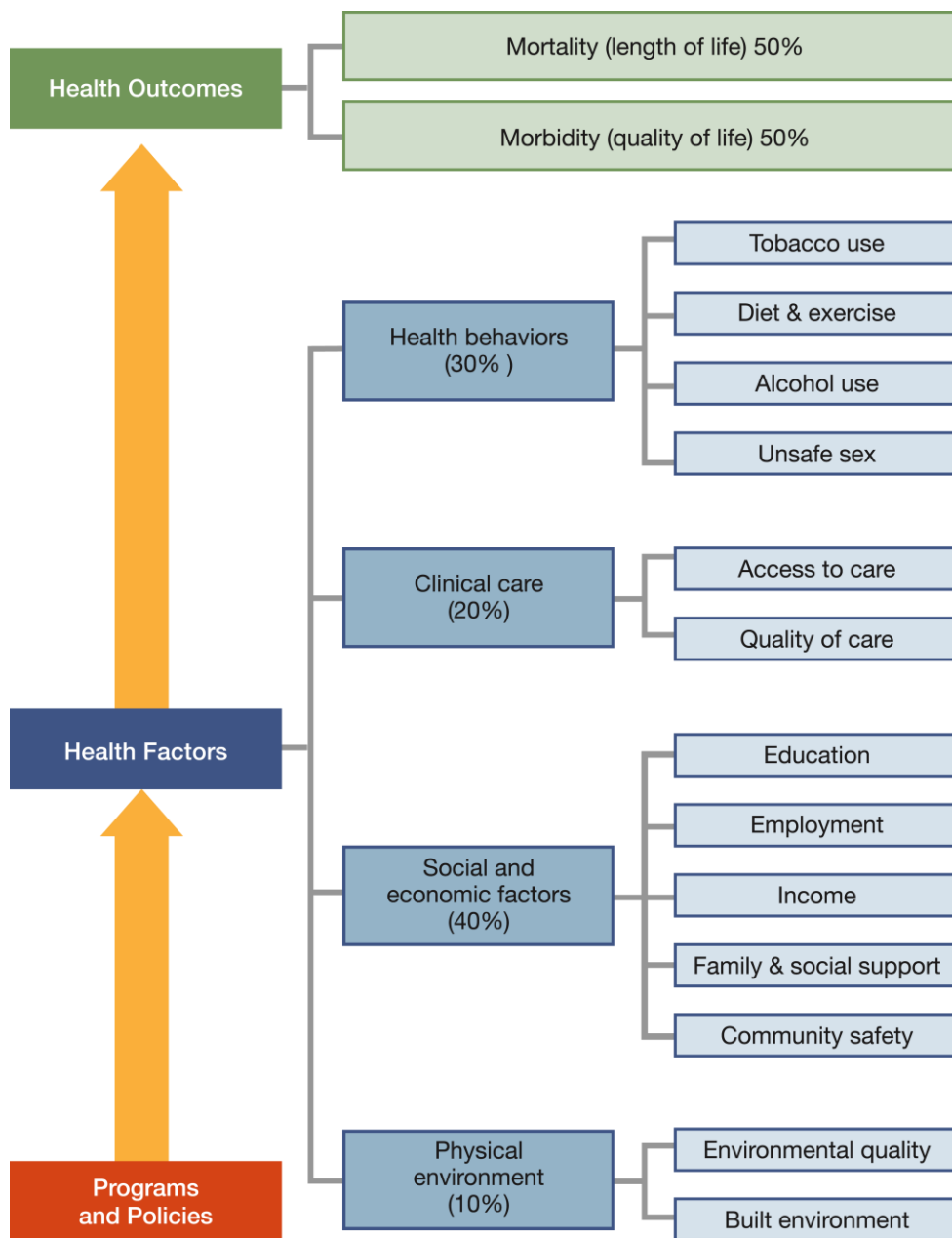
For a more detailed explanation of our approach, the methods used to compile the *Rankings*, information on the action steps communities can take to improve their health, and examples of communities in action, see www.countyhealthrankings.org



The Rankings

This report ranks Mississippi counties according to their summary measures of **health outcomes** and **health factors**, as well as the components used to create each summary measure. The figure below depicts the structure of the *Rankings* model. Counties receive a rank for each population health component; those having high ranks (e.g., 1 or 2) are estimated to be the “healthiest.”

Our summary **health outcomes** rankings are based on an equal weighting of mortality and morbidity measures. The summary **health factors** rankings are based on weighted scores of four types of factors: behavioral, clinical, social and economic, and environmental. The weights for the factors (shown in parentheses in the figure) are based upon a review of the literature and expert input, but represent just one way of combining these factors.

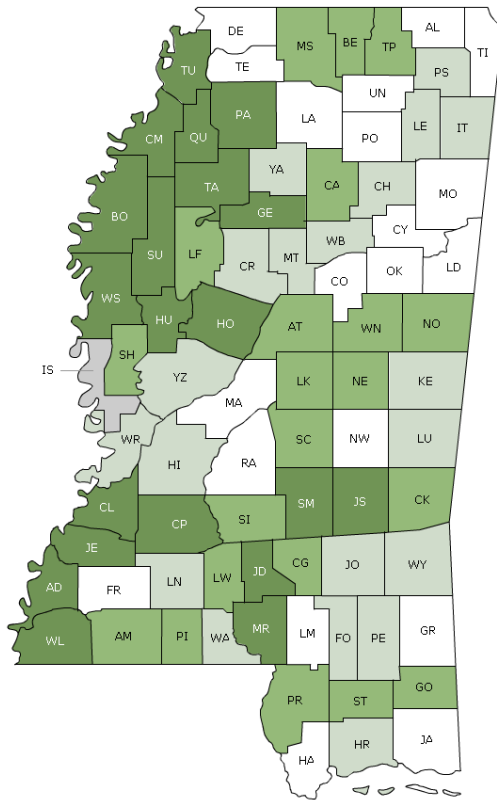


County Health Rankings model ©2010 UWPHI

The maps on this page display Mississippi's counties divided into groups by health rank. The lighter colors indicate better performance in the respective summary rankings. The green map shows the distribution of summary health outcomes. The blue displays the distribution of the summary rank for health factors.

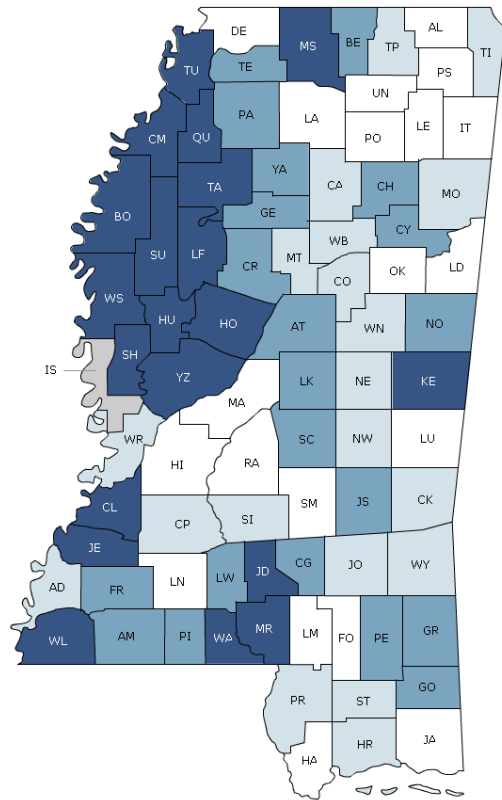
Maps help locate the healthiest and least healthy counties in the state. The health factors map appears similar to the health outcomes map, showing how health factors and health outcomes are closely related.

HEALTH OUTCOMES



Rank 1-20 Rank 21-40 Rank 41-61 Rank 62-81 Not Ranked

HEALTH FACTORS



Rank 1-20 Rank 21-40 Rank 41-61 Rank 62-81 Not Ranked

Summary Health Outcomes & Health Factors Rankings

Counties receive two summary ranks:

- Health Outcomes
- Health Factors

Each of these ranks represents a weighted summary of a number of measures.

Health outcomes represent how healthy a county is while health factors are what influences the health of the county.

Rank	Health Outcomes	Rank	Health Factors
1	DeSoto	1	Madison
2	Lafayette	2	Lamar
3	Rankin	3	Rankin
4	Lamar	4	Lafayette
5	Oktibbeha	5	DeSoto
6	Pontotoc	6	Lee
7	Madison	7	Oktibbeha
8	Lowndes	8	Itawamba
9	Greene	9	Pontotoc
10	Hancock	10	Alcorn
11	Alcorn	11	Union
12	Choctaw	12	Lauderdale
13	Clay	13	Lowndes
14	Tate	14	Forrest
15	Jackson	15	Prentiss
16	Newton	16	Jackson
17	Franklin	17	Hancock
18	Union	18	Lincoln
19	Tishomingo	19	Hinds
20	Monroe	20	Smith
21	Webster	21	Jones
22	Walthall	22	Monroe
23	Warren	23	Newton
24	Lee	24	Harrison
25	Prentiss	25	Clarke
26	Yazoo	26	Neshoba
27	Itawamba	27	Warren
28	Kemper	28	Tishomingo
29	Yalobusha	29	Stone
30	Jones	30	Choctaw
31	Lincoln	31	Tippah
32	Chickasaw	32	Simpson
33	Lauderdale	33	Webster
34	Harrison	34	Pearl River
35	Forrest	35	Winston
36	Montgomery	36	Wayne
37	Carroll	37	Adams
38	Perry	38	Copiah
39	Hinds	39	Calhoun
40	Wayne	40	Montgomery

Rank	Health Outcomes	Rank	Health Factors
41	Pearl River	41	Jasper
42	Marshall	42	Chickasaw
43	Covington	43	Attala
44	Attala	44	Lawrence
45	Winston	45	Perry
46	Benton	46	Leake
47	Lawrence	47	George
48	Sharkey	48	Carroll
49	Noxubee	49	Grenada
50	Leake	50	Franklin
51	Calhoun	51	Tate
52	Scott	52	Covington
53	Simpson	53	Benton
54	Pike	54	Greene
55	Clarke	55	Yalobusha
56	Neshoba	56	Noxubee
57	Amite	57	Panola
58	George	58	Scott
59	Leflore	59	Amite
60	Tippah	60	Pike
61	Stone	61	Clay
62	Copiah	62	Wilkinson
63	Washington	63	Jefferson Davis
64	Wilkinson	64	Walthall
65	Panola	65	Yazoo
66	Jasper	66	Bolivar
67	Smith	67	Kemper
68	Grenada	68	Washington
69	Bolivar	69	Marion
70	Adams	70	Claiborne
71	Coahoma	71	Sharkey
72	Tunica	72	Sunflower
73	Humphreys	73	Leflore
74	Holmes	74	Marshall
75	Jefferson	75	Jefferson
76	Sunflower	76	Tallahatchie
77	Claiborne	77	Quitman
78	Marion	78	Tunica
79	Quitman	79	Humphreys
80	Tallahatchie	80	Coahoma
81	Jefferson Davis	81	Holmes

Not Ranked: Issaquena

Health Outcomes Rankings

The summary health outcomes ranking is based on measures of mortality and morbidity. Each county's ranks for mortality and morbidity are displayed here. The mortality rank, representing length of life, is based on a measure of premature death: the years of potential life lost prior to age 75.

The morbidity rank is based on measures that represent health-related quality of life and birth outcomes. We combine four morbidity measures: self-reported fair or poor health, poor physical health days, poor mental health days, and the percent of births with low birthweight.

Rank	Mortality	Morbidity
1	DeSoto	DeSoto
2	Lafayette	Madison
3	Rankin	Lamar
4	Pontotoc	Choctaw
5	Lamar	Rankin
6	Oktibbeha	Lafayette
7	Franklin	Oktibbeha
8	Greene	Sharkey
9	Lowndes	Hancock
10	Newton	Jackson
11	Clay	Lee
12	Alcorn	Tate
13	Monroe	Lowndes
14	Webster	Alcorn
15	Hancock	Lauderdale
16	Wayne	Warren
17	Kemper	Carroll
18	Chickasaw	Prentiss
19	Union	Jones
20	Tishomingo	Greene
21	Attala	Humphreys
22	Walthall	Yalobusha
23	Tate	Montgomery
24	Yazoo	Neshoba
25	Lincoln	Harrison
26	Tippah	Itawamba
27	Madison	Clay
28	Itawamba	Walthall
29	Perry	Pearl River
30	Covington	Pontotoc
31	Warren	Marshall
32	Jackson	Union
33	Forrest	Yazoo
34	Prentiss	Tishomingo
35	Noxubee	Forrest
36	Yalobusha	Coahoma
37	Amite	Bolivar
38	Hinds	Tunica
39	Harrison	Leake
40	Choctaw	George

Rank	Mortality	Morbidity
41	Lee	Hinds
42	Benton	Lincoln
43	Jones	Smith
44	Montgomery	Washington
45	Lauderdale	Newton
46	Winston	Panola
47	Lawrence	Stone
48	Pike	Quitman
49	Scott	Webster
50	Clarke	Monroe
51	Carroll	Perry
52	Calhoun	Lawrence
53	Simpson	Kemper
54	Pearl River	Winston
55	Marshall	Leflore
56	Copiah	Calhoun
57	Leflore	Chickasaw
58	Adams	Sunflower
59	Leake	Simpson
60	George	Benton
61	Stone	Marion
62	Wilkinson	Scott
63	Grenada	Clarke
64	Neshoba	Pike
65	Jefferson	Holmes
66	Jasper	Wilkinson
67	Claiborne	Jasper
68	Washington	Covington
69	Sharkey	Noxubee
70	Panola	Copiah
71	Tallahatchie	Franklin
72	Smith	Amite
73	Holmes	Grenada
74	Bolivar	Attala
75	Coahoma	Wayne
76	Tunica	Jefferson Davis
77	Sunflower	Tippah
78	Humphreys	Adams
79	Marion	Jefferson
80	Quitman	Claiborne
81	Jefferson Davis	Tallahatchie

Health Factors Rankings

The summary health factors ranking is based on four factors: health behaviors, clinical care, social and economic, and physical environment factors. In turn, each of these factors is based on several measures. Health behaviors include measures of smoking, diet and exercise, alcohol use, and risky sex behavior. Clinical

care includes measures of access to care and quality of care. Social and economic factors include measures of education, employment, income, family and social support, and community safety. The physical environment includes measures of environmental quality and the built environment.

Rank	Health Behaviors	Rank	Clinical Care	Rank	Social & Economic Factors	Rank	Physical Environment
1	Madison	1	Madison	1	Lamar	1	Rankin
2	Oktibbeha	2	Lamar	2	Lafayette	2	Madison
3	Lafayette	3	Lee	3	Rankin	3	Neshoba
4	Noxubee	4	Rankin	4	Madison	4	Warren
5	Smith	5	Hinds	5	DeSoto	5	Tishomingo
6	Lamar	6	Lauderdale	6	Jackson	6	Scott
7	Clarke	7	Lowndes	7	Smith	7	Leflore
8	Lee	8	Hancock	8	Pontotoc	8	Adams
9	Choctaw	9	Monroe	9	Harrison	9	Grenada
10	Alcorn	10	Winston	10	Union	10	Chickasaw
11	Webster	11	Washington	11	Pearl River	11	Itawamba
12	Rankin	12	Union	12	Lincoln	12	Forrest
13	Wayne	13	Attala	13	Itawamba	13	Choctaw
14	DeSoto	14	Prentiss	14	Newton	13	Winston
15	Tippah	15	Adams	15	Lee	15	Washington
16	Tishomingo	16	Jones	16	Hancock	16	Lee
17	Hinds	17	DeSoto	17	Oktibbeha	17	Monroe
18	Itawamba	18	Itawamba	18	Stone	18	Leake
19	Prentiss	19	Tunica	19	Tate	18	Prentiss
20	Simpson	20	Lincoln	20	Forrest	20	Sunflower
21	Lauderdale	21	Lafayette	21	Jones	21	Calhoun
22	Forrest	22	Jackson	22	Alcorn	21	Oktibbeha
23	Monroe	23	Copiah	23	Lawrence	23	Lamar
24	Pontotoc	24	Warren	24	Perry	24	Covington
25	Clay	25	Pontotoc	25	Lowndes	25	Lowndes
26	Hancock	26	Leflore	26	Lauderdale	26	Wilkinson
27	Union	27	Benton	27	Simpson	27	Lafayette
28	Lowndes	28	Grenada	28	Neshoba	28	Alcorn
29	Newton	29	Wilkinson	29	Greene	29	Tate
30	Attala	30	Forrest	30	Prentiss	30	Noxubee
31	Winston	31	Montgomery	31	George	31	Walthall
32	Jefferson Davis	32	Humphreys	32	Wayne	32	Lawrence
33	Montgomery	33	Chickasaw	33	Scott	33	Hinds
34	Perry	34	Holmes	34	Tishomingo	34	George
35	Jones	35	Tallahatchie	35	Franklin	35	Panola
36	Lincoln	36	Tippah	36	Warren	36	Webster
37	Carroll	37	Clay	37	Jasper	37	Jones
38	Jackson	38	Bolivar	38	Calhoun	38	Pontotoc
39	Jasper	39	Yalobusha	39	Copiah	39	Pike
40	Stone	40	Oktibbeha	40	Clarke	40	Tallahatchie

Rank	Health Behaviors	Rank	Clinical Care	Rank	Social & Economic Factors	Rank	Physical Environment
41	Chickasaw	41	Jefferson Davis	41	Hinds	41	Jefferson Davis
42	Harrison	42	Alcorn	42	Monroe	41	Perry
43	Warren	43	Harrison	43	Webster	43	Coahoma
44	Neshoba	44	Yazoo	44	Covington	44	Lincoln
45	Grenada	45	Neshoba	45	Tippah	45	Attala
46	Claiborne	46	Coahoma	46	Pike	45	Humphreys
47	Calhoun	47	Noxubee	47	Choctaw	45	Kemper
48	Adams	48	Panola	48	Leake	45	Montgomery
49	Bolivar	49	Stone	49	Carroll	45	Sharkey
50	Amite	50	Clarke	50	Walthall	50	Newton
51	Franklin	51	Leake	51	Montgomery	51	Marion
52	George	52	Jasper	52	Adams	52	Smith
53	Yalobusha	53	Pike	53	Kemper	53	Copiah
54	Leake	54	Calhoun	54	Chickasaw	54	Holmes
55	Yazoo	55	Carroll	55	Panola	54	Yazoo
56	Pearl River	56	Jefferson	56	Benton	56	Quitman
57	Washington	57	Covington	57	Amite	56	Yalobusha
58	Copiah	58	Amite	58	Marshall	58	Simpson
59	Walthall	59	Sunflower	59	Winston	59	Stone
60	Benton	60	Pearl River	60	Marion	60	Franklin
61	Greene	61	Marshall	61	Grenada	61	Benton
62	Wilkinson	62	Marion	62	Yalobusha	61	Claiborne
63	Sharkey	63	Quitman	63	Attala	61	Clay
64	Leflore	64	Sharkey	64	Claiborne	61	Jefferson
65	Panola	65	Newton	65	Wilkinson	61	Tippah
66	Lawrence	66	Kemper	66	Yazoo	66	Marshall
67	Covington	67	Choctaw	67	Sharkey	67	DeSoto
68	Sunflower	68	Webster	68	Sunflower	68	Carroll
69	Quitman	69	Lawrence	69	Jefferson	69	Clarke
70	Jefferson	70	Tate	70	Tallahatchie	70	Lauderdale
71	Tate	71	Tishomingo	71	Bolivar	71	Pearl River
72	Kemper	72	Franklin	72	Jefferson Davis	72	Tunica
73	Scott	73	Simpson	73	Clay	73	Union
74	Marion	74	Wayne	74	Quitman	74	Bolivar
75	Pike	75	Greene	75	Tunica	75	Jasper
76	Tallahatchie	76	George	76	Coahoma	76	Amite
77	Marshall	77	Scott	77	Noxubee	76	Wayne
78	Coahoma	78	Claiborne	78	Humphreys	78	Hancock
79	Humphreys	79	Walthall	79	Washington	79	Jackson
80	Holmes	80	Smith	80	Leflore	80	Harrison
81	Tunica	81	Perry	81	Holmes	81	Greene

2011 County Health Rankings: Measures, Data Sources, and Years of Data

	Measure	Data Source	Years of Data
HEALTH OUTCOMES			
Mortality	Premature death	National Center for Health Statistics	2005-2007
Morbidity	Poor or fair health	Behavioral Risk Factor Surveillance System	2003-2009
	Poor physical health days	Behavioral Risk Factor Surveillance System	2003-2009
	Poor mental health days	Behavioral Risk Factor Surveillance System	2003-2009
	Low birthweight	National Center for Health Statistics	2001-2007
HEALTH FACTORS			
HEALTH BEHAVIORS			
Tobacco	Adult smoking	Behavioral Risk Factor Surveillance System	2003-2009
Diet and Exercise	Adult obesity	National Center for Chronic Disease Prevention and Health Promotion	2008
Alcohol Use	Excessive drinking	Behavioral Risk Factor Surveillance System	2003-2009
	Motor vehicle crash death rate	National Center for Health Statistics	2001-2007
High Risk Sexual Behavior	Sexually transmitted infections	National Center for Hepatitis, HIV, STD and TB Prevention	2008
	Teen birth rate	National Center for Health Statistics	2001-2007
CLINICAL CARE			
Access to Care	Uninsured adults	Small Area Health Insurance Estimates, U.S. Census	2007
	Primary care providers	Health Resources & Services Administration	2008
Quality of Care	Preventable hospital stays	Medicare/Dartmouth Institute	2006-2007
	Diabetic screening	Medicare/Dartmouth Institute	2006-2007
	Mammography screening	Medicare/Dartmouth Institute	2006-2007
SOCIOECONOMIC FACTORS			
Education	High school graduation	National Center for Education Statistics ¹	2006-2007
	Some college	American Community Survey	2005-2009
Employment	Unemployment	Bureau of Labor Statistics	2009
Income	Children in poverty	Small Area Income and Poverty Estimates, U.S. Census	2008
Family and Social Support	Inadequate social support	Behavioral Risk Factor Surveillance System	2005-2009
	Single-parent households	American Community Survey	2005-2009
Community Safety	Violent crime ²	Uniform Crime Reporting, Federal Bureau of Investigation	2006-2008
PHYSICAL ENVIRONMENT			
Air Quality ³	Air pollution-particulate matter days	U.S. Environmental Protection Agency / Centers for Disease Control and Prevention	2006
	Air pollution-ozone days	U.S. Environmental Protection Agency / Centers for Disease Control and Prevention	2006
Built Environment	Access to healthy foods	Census Zip Code Business Patterns	2008
	Access to recreational facilities	Census County Business Patterns	2008

¹ State data sources for KY, NH, NC, PA, SC, and UT (2008-2009).

² Homicide rate (2001-2007) from National Center for Health Statistics for AK, AZ, AR, CO, CT, GA, ID, IN, IA, KS, KY, LA, MN, MS, MT, NE, NH, NM, NC, ND, OH, SD, UT, and WV. State data source for IL.

³ Not available for AK and HI.

CREDITS

Report Authors

University of Wisconsin-Madison
School of Medicine and Public Health
Department of Population Health Sciences
Population Health Institute

Bridget Booske, PhD, MHSA
Jessica Athens, MS
Patrick Remington, MD, MPH

This publication would not have been possible without the following contributions:

Technical Advisors

Amy Bernstein, ScD, Centers for Disease Control and Prevention
Michele Bohm, MPH, Centers for Disease Control and Prevention

Research Assistance

Jennifer Buechner
Hyojun Park, MA
Seth Prins, MPH
Jennifer Robinson
Matthew Rodock
Anne Roubal

Communications and Outreach

Burness Communications
Ivan Cherniack
Nathan Jones, PhD
Kate Konkle, MPH
Angela Russell
Julie Willems Van Dijk, PhD, RN

Design

Forum One, Alexandria, VA
Media Solutions, UW School of Medicine and Public Health

Robert Wood Johnson Foundation

Brenda L. Henry, PhD, MPH – Program Officer
Michelle Larkin, JD, MS, RN – Team Director and Senior Program Officer
James S. Marks, MD, MPH – Senior Vice President and Group Director, Health Group
Joe Marx – Senior Communications Officer

Suggested citation: University of Wisconsin Population Health Institute. *County Health Rankings 2011*.



County Health Rankings

Mobilizing Action Toward Community Health

countyhealthrankings.org



University of Wisconsin Population Health Institute
610 Walnut St, #524, Madison, WI 53726
(608) 265-6370 / info@countyhealthrankings.org