



# County Health Rankings

Mobilizing Action Toward Community Health

2011

**Texas**



Robert Wood Johnson Foundation



UNIVERSITY OF WISCONSIN

**Population Health Institute**

*Translating Research into Policy and Practice*



## Introduction

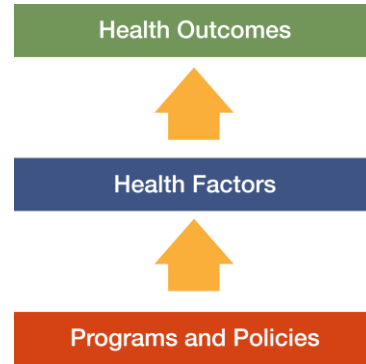
Where we live matters to our health. The health of a community depends on many different factors, including quality of health care, individual behavior, education and jobs, and the environment. We can improve a community's health through programs and policies. For example, people who live in communities with ample park and recreation space are more likely to exercise, which reduces heart disease risk. People who live in communities with smoke-free laws are less likely to smoke or to be exposed to second-hand smoke, which reduces lung cancer risk.

The problem is that there are big differences in health across communities, with some places being much healthier than others. And up to now, it has been hard to get a standard way to measure how healthy a county is and see where they can improve.

The Robert Wood Johnson Foundation and the University of Wisconsin Population Health Institute are pleased to present the 2011 *County Health Rankings*, a collection of 50 reports that reflect the overall health of counties in every state across the country. For the second year in a row, counties can get a snapshot of how healthy their residents are by comparing their overall health and the factors that influence their health with other counties in their state. This allows communities to see county-to-county where they are doing well and where they need to improve.

Everyone has a stake in community health. We all need to work together to find solutions. The *County Health Rankings* serve as both a call to action and a needed tool in this effort.

All of the *County Health Rankings* are based upon this model of population health improvement:



In this model, health outcomes are measures that describe the current health status of a county. These health outcomes are influenced by a set of health factors. These health factors and their outcomes may also be affected by community-based programs and policies designed to alter their distribution in the community. Counties can improve health outcomes by addressing all health factors with effective, evidence-based programs and policies.

To compile the *Rankings*, we built on our prior work in Wisconsin, obtained input from a team of expert advisors, and worked closely with staff from the National Center for Health Statistics. Together we selected a number of population health measures based on scientific relevance, importance, and availability of data at the county level.

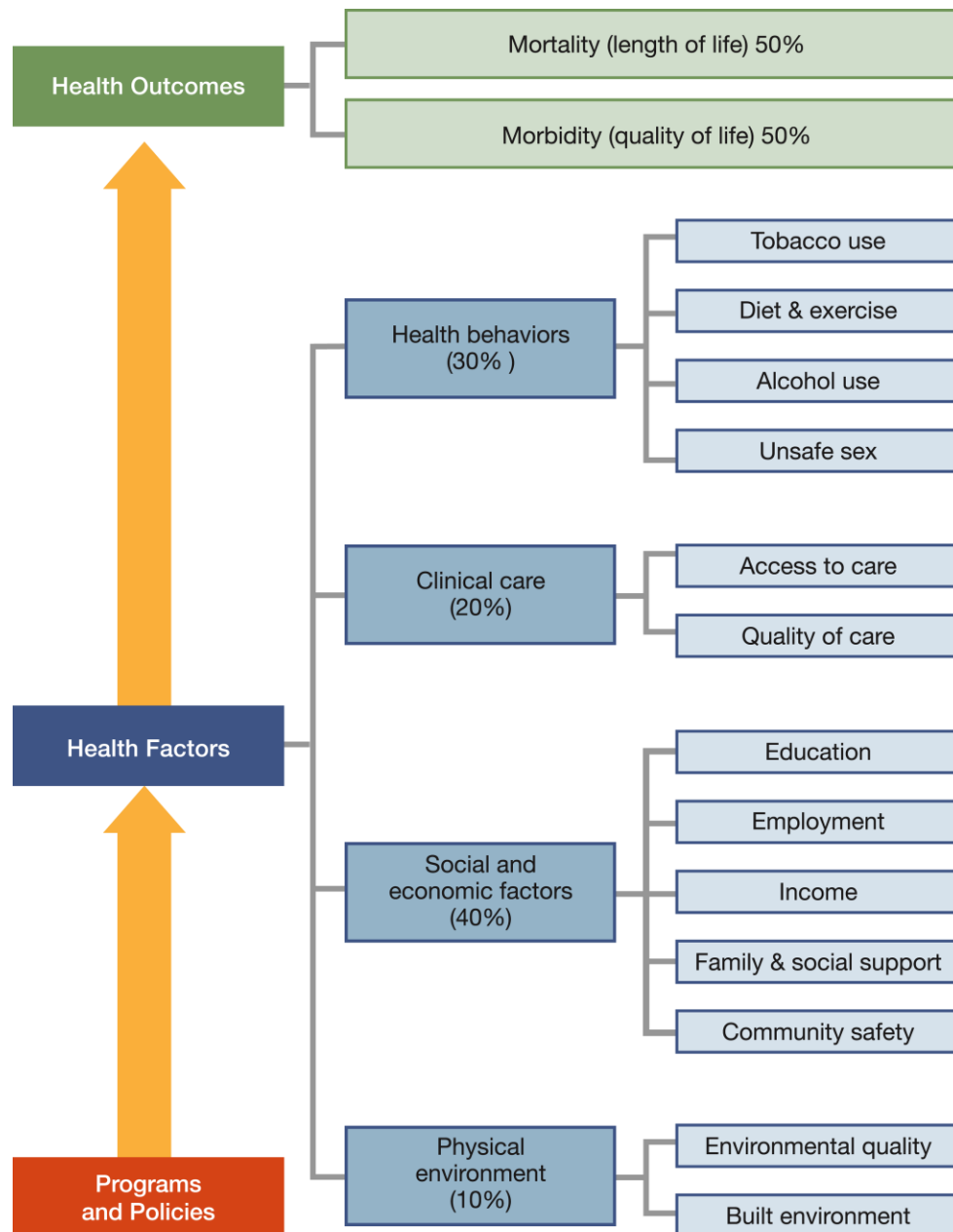
For a more detailed explanation of our approach, the methods used to compile the *Rankings*, information on the action steps communities can take to improve their health, and examples of communities in action, see [www.countyhealthrankings.org](http://www.countyhealthrankings.org)



## The Rankings

This report ranks Texas counties according to their summary measures of **health outcomes** and **health factors**, as well as the components used to create each summary measure. The figure below depicts the structure of the *Rankings* model. Counties receive a rank for each population health component; those having high ranks (e.g., 1 or 2) are estimated to be the “healthiest.”

Our summary **health outcomes** rankings are based on an equal weighting of mortality and morbidity measures. The summary **health factors** rankings are based on weighted scores of four types of factors: behavioral, clinical, social and economic, and environmental. The weights for the factors (shown in parentheses in the figure) are based upon a review of the literature and expert input, but represent just one way of combining these factors.

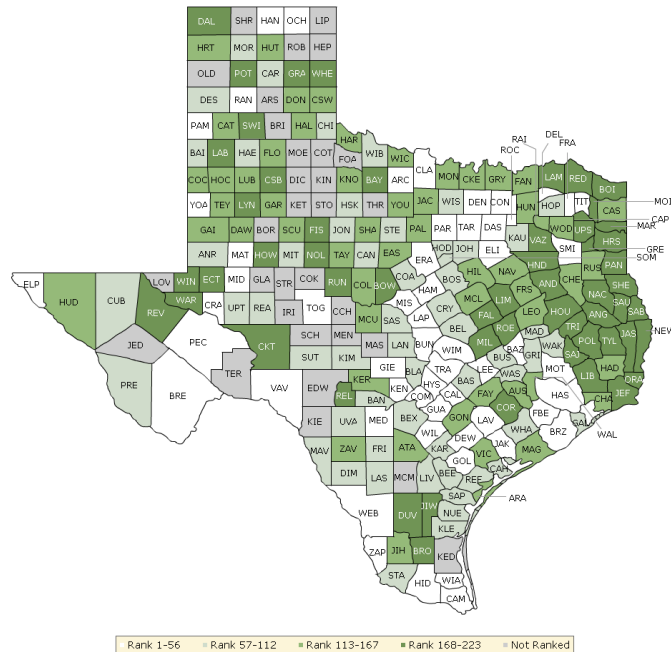


County Health Rankings model ©2010 UWPHI

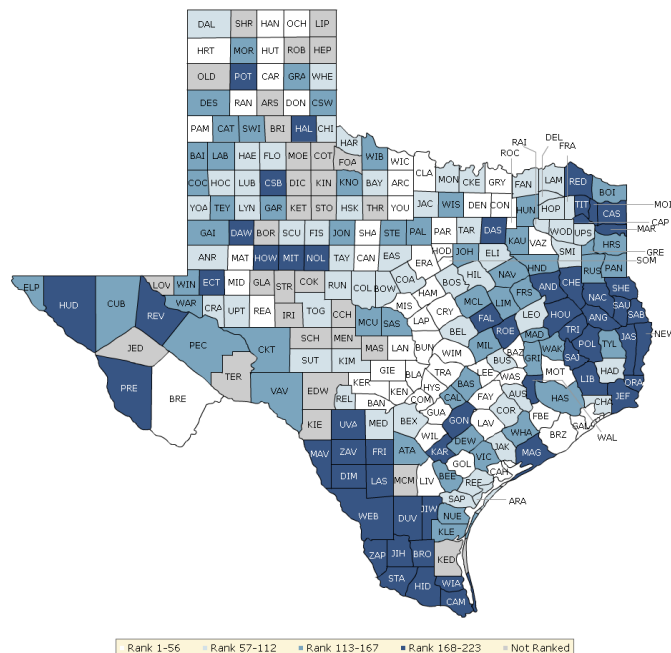
The maps on this page display Texas's counties divided into groups by health rank. The lighter colors indicate better performance in the respective summary rankings. The green map shows the distribution of summary health outcomes. The blue displays the distribution of the summary rank for health factors.

Maps help locate the healthiest and least healthy counties in the state. The health factors map appears similar to the health outcomes map, showing how health factors and health outcomes are closely related.

### HEALTH OUTCOMES



### HEALTH FACTORS



## Summary Health Outcomes & Health Factors Rankings

Counties receive two summary ranks:

- Health Outcomes
- Health Factors

Each of these ranks represents a weighted summary of a number of measures.

Health outcomes represent how healthy a county is while health factors are what influences the health of the county.

Rank	Health Outcomes	Rank	Health Factors
1	Williamson	1	Collin
2	Collin	2	Kendall
3	Denton	3	Gillespie
4	Gillespie	4	Williamson
5	Rockwall	5	Comal
6	Travis	6	Rockwall
7	Brazos	7	Randall
8	Comal	8	Fort Bend
9	Kendall	9	Travis
10	Hays	10	Denton
11	Fort Bend	11	Carson
12	Franklin	12	Hays
13	Lavaca	13	Montgomery
14	Brewster	14	Lavaca
15	Ellis	15	Llano
16	Erath	16	Archer
17	Midland	17	Brazos
18	DeWitt	18	Shackelford
19	Guadalupe	19	Somervell
20	Burnet	20	Hartley
21	Mills	21	Brewster
22	Hansford	22	Goliad
23	Ochiltree	23	Hood
24	Hidalgo	24	Blanco
25	Lee	25	Calhoun
26	Delta	26	Fayette
27	Willacy	27	Wichita
28	Randall	28	Kerr
29	Brazoria	29	Midland
30	Webb	30	Wilson
31	Zapata	31	Reagan
32	Tarrant	32	Parmer
33	Jackson	33	Erath
34	Hamilton	34	Donley
35	Pecos	35	Clay
36	Archer	36	Bandera
37	Cameron	37	Galveston
38	Tom Green	38	Callahan
39	Caldwell	39	Parker
40	Clay	40	Guadalupe

Rank	Health Outcomes	Rank	Health Factors
41	Val Verde	41	Young
42	Goliad	42	Brazoria
43	El Paso	43	Mills
44	Parker	44	Burnet
45	Wilson	45	Live Oak
46	Yoakum	46	Ochiltree
47	Harris	47	Hamilton
48	Medina	48	Lee
49	Montgomery	49	Hutchinson
50	Dallas	50	Washington
51	Smith	51	Hansford
52	Martin	52	Lampasas
53	Titus	53	Van Zandt
54	Parmer	54	Martin
55	Lampasas	55	Coryell
56	Crane	56	Grayson
57	Bailey	57	Bexar
58	Coryell	58	Bosque
59	Hale	59	San Patricio
60	Maverick	60	Aransas
61	Blanco	61	Tom Green
62	Reagan	62	Baylor
63	Llano	63	Hardin
64	Wharton	64	Chambers
65	Hopkins	65	Lubbock
66	Bell	66	Smith
67	Mitchell	67	Sutton
68	Comanche	68	Eastland
69	Wise	69	Tarrant
70	Carson	70	Franklin
71	Bexar	71	Lamar
72	Washington	72	Yoakum
73	Dimmit	73	Fannin
74	San Saba	74	Scurry
75	Bastrop	75	Leon
76	Somervell	76	Montague
77	Burleson	77	Fisher
78	Refugio	78	Runnels
79	Hood	79	Coleman
80	Kleberg	80	Taylor
81	Johnson	81	Haskell
82	Starr	82	Andrews
83	Madison	83	Refugio
84	Presidio	84	Jackson
85	Kimble	85	Hardeman
86	Childress	86	Ellis
87	Moore	87	Crane
88	Live Oak	88	Lynn

Rank	Health Outcomes	Rank	Health Factors
89	Bee	89	Floyd
90	Culberson	90	Jack
91	Deaf Smith	91	Austin
92	Calhoun	92	Burleson
93	Wilbarger	93	Hockley
94	Walker	94	Childress
95	Frio	95	Kimble
96	Upton	96	Upton
97	San Patricio	97	Upshur
98	Uvalde	98	Brown
99	Grimes	99	Wheeler
100	La Salle	100	Comanche
101	Bosque	101	Delta
102	Bandera	102	Dallam
103	Nueces	103	Hale
104	Sutton	104	Colorado
105	Jones	105	Rains
106	Karnes	106	Bell
107	Stephens	107	Medina
108	Callahan	108	Hopkins
109	Haskell	109	Cooke
110	Andrews	110	Real
111	Kaufman	111	Wood
112	Galveston	112	Hill
113	Terry	113	Rusk
114	Gaines	114	Val Verde
115	Cooke	115	Panola
116	Freestone	116	Henderson
117	Collingsworth	117	Gaines
118	Hardeman	118	Freestone
119	Hockley	119	El Paso
120	Zavala	120	Johnson
121	Hartley	121	Gregg
122	Victoria	122	Bailey
123	Waller	123	Winkler
124	Knox	124	Tyler
125	McLennan	125	Bowie
126	Jack	126	Knox
127	Hill	127	Nueces
128	Shackelford	128	Stephens
129	Castro	129	Atascosa
130	Hall	130	Wilbarger
131	Chambers	131	Ward
132	Scurry	132	Cochran
133	Grayson	133	McCulloch
134	Lubbock	134	Limestone
135	Hardin	135	Moore
136	Wood	136	Kleberg



Rank	Health Outcomes	Rank	Health Factors
137	Palo Pinto	137	Deaf Smith
138	Fannin	138	Palo Pinto
139	Wichita	139	Swisher
140	Fayette	140	Kaufman
141	Matagorda	141	Grimes
142	Aransas	142	Walker
143	Coleman	143	Victoria
144	Atascosa	144	Wise
145	Floyd	145	Pecos
146	Jim Hogg	146	Hunt
147	Rusk	147	Crockett
148	McCulloch	148	Gray
149	Donley	149	Jones
150	Garza	150	Collingsworth
151	Leon	151	Wharton
152	Austin	152	San Saba
153	Montague	153	Milam
154	Cochran	154	Harris
155	Kerr	155	Castro
156	Hutchinson	156	DeWitt
157	Cass	157	Garza
158	Dawson	158	Lamb
159	Cherokee	159	Bee
160	Hudspeth	160	McLennan
161	Gonzales	161	Harrison
162	Eastland	162	Navarro
163	Navarro	163	Madison
164	Rains	164	Terry
165	Hunt	165	Bastrop
166	Taylor	166	Caldwell
167	Young	167	Culberson
168	Angelina	168	Trinity
169	Dallam	169	Anderson
170	Lamb	170	Dallas
171	Van Zandt	171	Mitchell
172	Henderson	172	Jim Hogg
173	Ward	173	Houston
174	Fisher	174	Hudspeth
175	Crockett	175	Waller
176	Colorado	176	Red River
177	Shelby	177	Angelina
178	Howard	178	Dawson
179	Lynn	179	Uvalde
180	Upshur	180	Nacogdoches
181	Gregg	181	Karnes
182	Duval	182	Orange
183	Jim Wells	183	Robertson
184	Swisher	184	Gonzales

Rank	Health Outcomes	Rank	Health Factors
185	Reeves	185	Howard
186	Tyler	186	Titus
187	Nacogdoches	187	Cass
188	Lamar	188	Duval
189	Brown	189	Nolan
190	Falls	190	Marion
191	Ector	191	Crosby
192	Panola	192	Ector
193	Jasper	193	La Salle
194	Runnels	194	Hall
195	Bowie	195	Cameron
196	Gray	196	Liberty
197	Real	197	Newton
198	Camp	198	Sabine
199	Robertson	199	Cherokee
200	Limestone	200	San Jacinto
201	Baylor	201	Shelby
202	Anderson	202	Camp
203	Milam	203	Jasper
204	Crosby	204	Presidio
205	Jefferson	205	San Augustine
206	Potter	206	Jim Wells
207	San Augustine	207	Morris
208	Sabine	208	Frio
209	Houston	209	Jefferson
210	San Jacinto	210	Polk
211	Harrison	211	Falls
212	Brooks	212	Matagorda
213	Winkler	213	Hidalgo
214	Liberty	214	Potter
215	Nolan	215	Brooks
216	Morris	216	Maverick
217	Wheeler	217	Webb
218	Red River	218	Zapata
219	Orange	219	Reeves
220	Newton	220	Dimmit
221	Trinity	221	Willacy
222	Polk	222	Zavala
223	Marion	223	Starr

**Not Ranked:** Armstrong, Borden, Briscoe, Coke, Concho, Cottle, Dickens, Edwards, Foard, Glasscock, Hemphill, Irion, Jeff Davis, Kenedy, Kent, King, Kinney, Lipscomb, Loving, McMullen, Mason, Menard, Motley, Oldham, Roberts, Schleicher, Sherman, Sterling, Stonewall, Terrell, Throckmorton

## Health Outcomes Rankings

The summary health outcomes ranking is based on measures of mortality and morbidity. Each county's ranks for mortality and morbidity are displayed here. The mortality rank, representing length of life, is based on a measure of premature death: the years of potential life lost prior to age 75.

The morbidity rank is based on measures that represent health-related quality of life and birth outcomes. We combine four morbidity measures: self-reported fair or poor health, poor physical health days, poor mental health days, and the percent of births with low birthweight.

Rank	Mortality	Rank	Morbidity
1	Brewster	1	Gillespie
2	Collin	2	Franklin
3	Williamson	3	Rockwall
4	Denton	4	Erath
5	Fort Bend	5	Williamson
6	Rockwall	6	DeWitt
7	Hays	7	Comal
8	Travis	8	Denton
9	Yoakum	9	Burnet
10	Mills	10	Kendall
11	Brazos	11	Brazos
12	Hidalgo	12	Lavaca
13	Comal	13	Collin
14	Gillespie	14	Martin
15	Kendall	15	Pecos
16	El Paso	16	Zapata
17	Cameron	17	Calhoun
18	Lavaca	18	Hamilton
19	Maverick	19	Llano
20	Guadalupe	20	Lampasas
21	Webb	21	Ellis
22	Willacy	22	Titus
23	Midland	23	Somervell
24	Ellis	24	Travis
25	Val Verde	25	Jackson
26	Randall	26	Reagan
27	Ochiltree	26	Stephens
28	Childress	28	Gonzales
29	Crane	29	Crockett
30	Tarrant	30	Midland
31	Lee	31	Palo Pinto
32	Terry	32	Hansford
33	Hale	33	Leon
34	Uvalde	34	Hays
35	Franklin	35	Archer
36	Coryell	36	Brazoria
37	Hansford	37	Hill
38	Delta	38	Goliad
39	Montgomery	39	Delta
40	Medina	40	Sutton

Rank	Mortality	Rank	Morbidity
41	Harris	41	Lee
42	Clay	42	Freestone
43	Brazoria	43	Tom Green
44	Caldwell	44	Ochiltree
45	Wilson	45	Wise
46	Johnson	46	Camp
47	Bexar	47	Haskell
48	Dallas	48	Bastrop
49	Starr	49	Bosque
50	Archer	50	Zavala
51	Burnet	51	Comanche
52	Kleberg	52	Burleson
53	Erath	53	San Saba
54	Tom Green	54	Tarrant
55	Smith	55	Guadalupe
56	Jackson	56	Presidio
57	Atascosa	57	Washington
58	Parker	58	Wilbarger
59	Bandera	59	Caldwell
60	DeWitt	60	Refugio
61	Mitchell	61	Hood
62	Parmer	62	Hopkins
63	San Patricio	63	Parker
64	Hockley	64	Limestone
65	Dimmit	65	Culberson
66	Bailey	66	Clay
67	Zapata	67	Wichita
68	Bell	68	Bailey
69	Hamilton	69	Upton
70	Carson	70	Parmer
71	La Salle	71	Wharton
72	Nueces	72	Randall
73	Bee	73	Fort Bend
74	Madison	74	Hardin
75	Goliad	75	Galveston
76	Blanco	76	Smith
77	Pecos	77	Blanco
78	Deaf Smith	78	Fayette
79	Live Oak	79	Grimes
80	Kimble	80	Wilson
81	Wharton	81	Waller
82	Moore	82	Dallas
83	Walker	83	Willacy
84	Floyd	84	Montague
85	Hopkins	85	Cooke
86	Jones	86	Harris
87	Karnes	87	Sabine
88	Callahan	88	Bell

Rank	Mortality	Rank	Morbidity
89	Lubbock	89	Gaines
90	Comanche	90	Hunt
91	Frio	91	Medina
92	Washington	92	Frio
93	Dawson	93	Webb
94	Crosby	94	Carson
95	Victoria	95	Gray
96	Wise	96	Van Zandt
97	San Saba	97	Rusk
98	Wood	98	Collingsworth
99	Swisher	99	Andrews
100	Refugio	100	Kaufman
101	Bastrop	101	Montgomery
102	Andrews	102	Upshur
103	Burleson	103	Dimmit
104	Austin	104	Mitchell
105	Hood	105	Hardeman
106	Kaufman	105	Kimble
107	Jack	107	Castro
108	Grimes	108	Mills
109	Titus	108	Real
110	Lampasas	110	Anderson
111	Collingsworth	111	Moore
111	Culberson	112	Navarro
111	Donley	113	Hidalgo
111	Fisher	114	Aransas
111	Hall	115	Walker
111	Hardeman	116	Gregg
111	Hartley	117	Live Oak
111	Hudspeth	118	Falls
111	Knox	119	Callahan
111	Martin	120	Scurry
111	Presidio	121	Hartley
111	Reagan	122	Jones
111	Shackelford	123	Madison
111	Upton	124	Karnes
125	McLennan	125	Coryell
126	Gaines	126	Coleman
127	Kerr	127	Val Verde
128	Matagorda	128	Knox
129	Jim Hogg	129	McLennan
130	Wilbarger	130	Dallam
131	Cooke	131	Deaf Smith
132	Galveston	132	Crane
133	Taylor	133	Chambers
134	Chambers	134	Grayson
135	Llano	135	Bexar
136	Fannin	136	Hale

Rank	Mortality	Rank	Morbidity
137	Grayson	137	Bee
138	Bosque	138	Robertson
139	Angelina	139	Young
140	Garza	140	Cochran
141	Castro	141	Cameron
142	Lamb	142	McCulloch
143	Scurry	143	San Jacinto
144	Haskell	144	Shackelford
145	Somervell	145	Fannin
146	Cass	146	Lynn
147	Hutchinson	147	Hall
148	Cherokee	147	Jack
149	Waller	149	Henderson
150	Coleman	150	Eastland
151	Bowie	151	Kleberg
152	Duval	152	Tyler
153	McCulloch	153	La Salle
154	Sutton	154	San Patricio
155	Aransas	155	Victoria
156	Rains	156	Starr
157	Ward	157	Nueces
158	Jim Wells	158	Matagorda
159	Freestone	159	Wheeler
160	Cochran	160	Panola
161	Stephens	161	Milam
162	Ector	162	Johnson
163	Zavala	163	Runnels
164	Calhoun	164	Garza
165	Eastland	165	Colorado
166	Nacogdoches	166	Shelby
167	Rusk	167	Brown
168	Hardin	168	El Paso
169	Lamar	169	Jim Hogg
170	Fayette	170	Hutchinson
171	Young	171	Reeves
172	Howard	172	Rains
173	Henderson	173	Cass
174	Wichita	174	Polk
175	Colorado	175	Nolan
176	Dallam	176	Winkler
177	Baylor	177	Bandera
178	Shelby	178	Cherokee
179	Jasper	179	San Augustine
180	Navarro	180	Howard
181	Hill	181	Wood
182	Reeves	182	Ward
183	Montague	183	Donley
184	Brown	184	Hockley

Rank	Mortality	Rank	Morbidity
185	Hunt	185	Harrison
186	Lynn	186	Jasper
187	Panola	187	Lubbock
188	Van Zandt	188	Lamar
189	Tyler	189	Childress
190	Jefferson	190	Maverick
191	Runnels	191	Angelina
192	Palo Pinto	192	Kerr
193	Potter	193	Uvalde
194	Gregg	194	Lamb
195	Upshur	195	Nacogdoches
196	Leon	196	Taylor
197	Houston	197	Austin
198	Falls	198	Brooks
199	Robertson	199	Houston
200	Milam	200	Yoakum
201	San Augustine	201	Potter
202	Real	202	Hudspeth
203	Brooks	203	Ector
204	Gonzales	204	Jim Wells
205	Gray	205	Floyd
206	Liberty	205	Newton
207	Harrison	207	Brewster
208	Anderson	208	Jefferson
209	Crockett	209	Duval
210	Winkler	210	Liberty
211	Limestone	211	Terry
212	Camp	212	Baylor
213	San Jacinto	213	Dawson
214	Nolan	214	Orange
215	Morris	215	Fisher
216	Sabine	216	Bowie
217	Red River	217	Atascosa
218	Orange	218	Morris
219	Wheeler	219	Trinity
220	Trinity	220	Swisher
221	Newton	221	Red River
222	Marion	222	Crosby
223	Polk	223	Marion

## Health Factors Rankings

The summary health factors ranking is based on four factors: health behaviors, clinical care, social and economic, and physical environment factors. In turn, each of these factors is based on several measures. Health behaviors include measures of smoking, diet and exercise, alcohol use, and risky sex behavior. Clinical

care includes measures of access to care and quality of care. Social and economic factors include measures of education, employment, income, family and social support, and community safety. The physical environment includes measures of environmental quality and the built environment.

Rank	Health Behaviors	Rank	Clinical Care	Rank	Social & Economic Factors	Rank	Physical Environment
1	Collin	1	Gillespie	1	Kendall	1	Lavaca
2	Fort Bend	2	Williamson	2	Collin	2	Goliad
3	Kendall	3	Collin	3	Rockwall	2	Hale
4	Travis	4	Smith	4	Williamson	2	Hutchinson
5	Williamson	5	Llano	5	Gillespie	5	Gillespie
6	Gillespie	6	Randall	6	Comal	6	Burleson
7	Montgomery	7	Wichita	7	Denton	7	Brewster
8	Comal	8	Bell	8	Carson	8	Ochiltree
9	Rockwall	9	Galveston	9	Archer	9	Aransas
10	El Paso	10	Kerr	10	Shackelford	10	Eastland
11	Llano	11	Carson	11	Hartley	11	Collingsworth
12	Calhoun	12	Nueces	12	Clay	11	Real
13	Parmer	13	Fort Bend	13	Fort Bend	13	San Patricio
14	Val Verde	14	Potter	14	Randall	14	Wheeler
15	Brewster	15	Bowie	15	Hays	15	Pecos
16	Cameron	16	Travis	16	Blanco	16	Brazos
17	Randall	17	Hood	17	Lavaca	17	Angelina
18	Chambers	18	Kendall	18	Fayette	18	Calhoun
19	Maverick	19	McLennan	19	Wilson	18	Deaf Smith
20	Brazos	20	Bexar	20	Guadalupe	20	Kimble
21	Donley	21	Taylor	21	Martin	21	Wichita
22	Bandera	22	Comal	22	Montgomery	22	Midland
23	Hays	23	Denton	23	Hansford	23	Maverick
24	Bexar	24	Gregg	24	Somervell	24	Burnet
25	Presidio	25	Lubbock	25	Reagan	25	Erath
26	Aransas	26	Rockwall	26	Ochiltree	26	McCulloch
27	Bosque	27	Victoria	27	Parmer	27	Andrews
28	Mills	28	Washington	28	Hood	27	Baylor
29	Denton	29	Tom Green	29	Callahan	27	Cochran
30	Lavaca	30	Hays	30	Parker	27	Crane
31	Lee	31	Somervell	31	Hamilton	27	Crockett
32	Eastland	32	Floyd	32	Upton	27	Crosby
33	Harris	33	Brazos	33	Brazoria	27	Floyd
34	Kimble	34	Jefferson	34	Midland	27	Gray
35	Hudspeth	35	Childress	35	Young	27	Hardeman
36	Fannin	36	Live Oak	36	Donley	27	Reagan
37	Comanche	37	Montgomery	37	Brewster	27	Ward
38	Erath	38	Tarrant	38	Freestone	27	Winkler
39	Goliad	39	Lamar	39	Erath	39	Jim Wells
40	Fayette	40	Ellis	40	Goliad	40	Marion



Rank	Health Behaviors	Rank	Clinical Care	Rank	Social & Economic Factors	Rank	Physical Environment
41	Somervell	41	Midland	41	Lampasas	41	Archer
42	San Patricio	42	Jasper	42	Yoakum	42	Cherokee
43	Shackelford	43	Hutchinson	43	Ellis	42	Robertson
44	Coleman	44	Marion	44	Jack	44	Hays
45	Carson	45	Brazoria	45	Crane	45	Childress
46	Lampasas	46	Scurry	46	Burnet	46	Bandera
47	Grayson	47	Lavaca	47	Brazos	46	Kerr
48	Tarrant	48	Hardin	48	Austin	48	Hidalgo
49	Hamilton	49	Harrison	49	Coryell	49	Leon
50	Franklin	50	Dallas	50	Sutton	50	Lee
51	San Saba	51	Colorado	51	Travis	51	Wood
52	McCulloch	52	Mills	52	Van Zandt	52	Cameron
53	Tyler	53	Anderson	53	Washington	53	Scurry
54	Parker	54	Wilson	54	Baylor	54	Ector
55	Lamar	55	San Patricio	55	Wheeler	55	Henderson
56	Starr	56	Polk	56	Wise	55	Stephens
57	Kerr	57	Henderson	57	Lee	57	Comal
58	Pecos	58	Guadalupe	58	Montague	58	Bell
59	Fisher	59	Young	59	Chambers	59	Webb
60	Bee	60	Morris	60	Bell	60	Gonzales
61	Real	61	Angelina	61	Moore	60	Randall
62	Culberson	62	Matagorda	62	Gaines	60	Runnels
63	Hardeman	63	Hartley	63	Haskell	63	Lubbock
64	Scurry	64	Runnels	64	Jackson	64	Walker
65	Van Zandt	65	Grayson	65	Dallam	65	Hardin
66	Archer	66	Wilbarger	66	Fisher	66	Taylor
67	Montague	67	Shackelford	67	Cooke	67	Lamb
68	Hockley	68	La Salle	68	Bandera	68	Houston
69	Duval	69	Navarro	69	Johnson	68	Live Oak
70	Ochiltree	70	Aransas	70	Hopkins	68	Rains
71	Runnels	71	Blanco	71	Refugio	71	McLennan
72	Baylor	72	Orange	72	Hockley	72	Kaufman
73	Upton	73	Brooks	73	Taylor	73	Bailey
74	Atascosa	74	Harris	74	Lynn	74	Rusk
75	Stephens	75	Kaufman	75	Tom Green	75	Van Zandt
76	Sutton	76	Milam	76	Hutchinson	76	Palo Pinto
77	Reagan	77	Wharton	77	Hill	77	Terry
78	Live Oak	78	Grimes	78	Panola	78	Brown
79	Hansford	79	Callahan	79	Hardin	79	Gregg
80	Rains	80	Cherokee	80	Live Oak	80	Comanche
81	Brazoria	81	Goliad	81	Eastland	80	Dawson
82	Kleberg	82	Palo Pinto	82	Bosque	82	Medina
83	Lynn	83	Calhoun	83	Andrews	83	Johnson
84	Coryell	84	Ector	84	Bailey	84	Fayette
85	Galveston	85	Coleman	85	Grayson	85	Jasper
86	Burnet	86	Johnson	86	Comanche	85	Nacogdoches
87	Uvalde	87	Houston	87	Wichita	87	Ellis
88	Hartley	88	Duval	88	Fannin	88	Waller

Rank	Health Behaviors	Rank	Clinical Care	Rank	Social & Economic Factors	Rank	Physical Environment
89	Brown	89	Hopkins	89	Lubbock	89	Galveston
90	Childress	90	Sutton	90	Llano	90	Lampasas
91	Hidalgo	91	Leon	91	Tarrant	91	Uvalde
92	Knox	92	Bastrop	92	Medina	92	Coryell
93	Burleson	93	Gray	93	Upshur	92	Jones
94	Austin	94	Burnet	94	Leon	94	Karnes
95	Haskell	95	Rusk	95	Galveston	95	Callahan
96	Wichita	96	Parker	96	Kerr	95	Dimmit
97	Callahan	97	Clay	97	Franklin	95	Gaines
98	Leon	98	Coryell	98	Kaufman	95	Hansford
99	Yoakum	99	Archer	99	Mills	95	Howard
100	Sabine	100	Reagan	100	Delta	95	Mills
101	Trinity	101	Austin	101	Bastrop	95	Moore
102	Martin	102	Walker	102	Calhoun	95	Parmer
103	Young	103	Franklin	103	Knox	95	Presidio
104	Zapata	104	Jackson	104	Hardeman	95	San Saba
105	Refugio	105	Howard	105	Swisher	95	Yoakum
106	Blanco	106	Brown	106	Nacogdoches	106	Upshur
107	Frio	107	Haskell	107	Hale	107	Orange
108	Delta	108	Wood	108	Cochran	108	Harrison
109	Upshur	109	Hale	109	Brown	109	Bee
110	Floyd	110	San Augustine	110	Wharton	109	Franklin
111	Wilson	111	Cass	111	Smith	111	Trinity
112	Midland	112	Hunt	112	Colorado	112	Anderson
113	Jackson	113	Bandera	113	Coleman	112	Bastrop
114	Rusk	114	Bosque	114	Castro	114	Chambers
115	Hall	115	Refugio	115	Mitchell	115	Llano
116	San Jacinto	116	Kimble	116	Collingsworth	116	Potter
117	Hardin	117	Van Zandt	117	Burleson	117	Coleman
118	Gaines	118	Newton	118	Bexar	118	Hunt
119	Jack	119	Jim Hogg	119	Limestone	119	Travis
120	Crane	120	Andrews	120	Runnels	120	Madison
121	Jones	121	Winkler	121	Culberson	120	Red River
122	Jim Hogg	122	Erath	122	Walker	122	Young
123	Reeves	123	Caldwell	123	Gregg	123	Rockwall
124	La Salle	124	Ward	124	San Patricio	124	Nueces
125	Winkler	125	Hill	125	Hunt	125	DeWitt
126	Dallam	126	Tyler	126	Wood	126	Liberty
127	Colorado	127	Upshur	127	Henderson	127	Grayson
128	Andrews	128	Rains	128	Lamar	128	Culberson
129	Hood	129	Donley	129	Rains	128	Delta
130	Washington	130	Cooke	130	Atascosa	128	Hartley
131	Hutchinson	131	Fisher	131	DeWitt	131	Montague
132	Tom Green	132	Medina	132	Scurry	132	Hood
133	Wood	133	Delta	133	Bowie	133	Caldwell
134	Deaf Smith	134	Lee	134	Deaf Smith	133	Freestone
135	Clay	135	Wise	135	Garza	135	Tom Green
136	Cooke	136	Lynn	136	Aransas	136	Milam

Rank	Health Behaviors	Rank	Clinical Care	Rank	Social & Economic Factors	Rank	Physical Environment
137	Castro	137	Martin	137	Rusk	137	Val Verde
138	Red River	138	Burleson	138	Titus	138	Panola
139	Guadalupe	139	Fannin	139	Jones	139	Kendall
140	Wheeler	140	Nacogdoches	140	McLennan	140	Hill
141	Willacy	141	Madison	141	Harrison	141	Blanco
142	Smith	142	El Paso	142	Wilbarger	141	Castro
143	DeWitt	143	Limestone	143	Crockett	141	Dallam
144	Medina	144	Uvalde	144	Crosby	141	Duval
145	Dallas	145	Crockett	145	Grimes	141	Frio
146	Houston	146	Brewster	146	Winkler	141	Garza
147	Swisher	147	Hamilton	147	Terry	141	Hamilton
148	Ward	148	Hardeman	148	Lamb	141	Knox
149	Dimmit	149	Panola	149	Stephens	141	La Salle
150	Jim Wells	150	Sabine	150	Ward	141	Reeves
151	Crosby	151	Real	151	Victoria	141	Refugio
152	Lubbock	152	Kleberg	152	Waller	141	San Augustine
153	Limestone	153	Robertson	153	Floyd	141	Shackelford
154	Wilbarger	154	Bailey	154	Orange	141	Upton
155	Zavala	155	Baylor	155	Palo Pinto	141	Zavala
156	Collingsworth	156	Gonzales	156	Kimble	156	Wilbarger
157	Panola	157	Jim Wells	157	Red River	157	Somervell
158	Brooks	158	Dawson	158	Real	158	Lamar
159	Lamb	159	Bee	159	Gray	159	Kleberg
160	Cochran	160	Montague	160	Madison	160	Grimes
161	Hale	161	Fayette	161	Kleberg	160	Limestone
162	Karnes	162	Karnes	162	Childress	162	Starr
163	Caldwell	163	Lampasas	163	Tyler	163	Williamson
164	Liberty	164	Garza	164	Navarro	164	Victoria
165	San Augustine	165	Willacy	165	Nueces	165	Atascosa
166	Hill	166	Nolan	166	Milam	166	Washington
167	Morris	167	Hockley	167	Pecos	167	Tyler
168	Newton	168	Val Verde	168	Angelina	168	Shelby
169	Nolan	169	Dallam	169	McCulloch	169	Camp
170	Terry	170	Jack	170	Robertson	170	Falls
171	Grimes	171	Yoakum	171	Caldwell	170	Newton
172	Dawson	172	Shelby	172	Val Verde	172	Fannin
173	Cass	173	Camp	173	Harris	173	Clay
174	Palo Pinto	174	Hidalgo	174	Nolan	174	Navarro
175	Milam	175	Waller	175	Anderson	175	Morris
176	Henderson	176	Hansford	176	Liberty	176	Bosque
177	Garza	177	Titus	177	San Saba	177	Titus
178	Crockett	178	Zavala	178	Gonzales	178	Wilson
179	Hopkins	179	Swisher	179	Dawson	179	Donley
180	Bailey	180	Stephens	180	Camp	179	Hall
181	Falls	181	Frio	181	Ector	179	Lynn
182	Madison	182	Cameron	182	Karnes	179	Mitchell
183	Matagorda	183	Mitchell	183	Trinity	179	Swisher
184	Freestone	184	Cochran	184	Cass	179	Zapata

Rank	Health Behaviors	Rank	Clinical Care	Rank	Social & Economic Factors	Rank	Physical Environment
185	Waller	185	Lamb	185	Shelby	185	Hopkins
186	Gonzales	186	Dimmit	186	Howard	186	Smith
187	Bowie	187	Trinity	187	Jim Hogg	187	Jackson
188	Marion	188	Hudspeth	188	Hall	188	Wharton
189	Webb	189	McCulloch	189	Falls	189	Carson
190	Moore	190	Terry	190	San Jacinto	189	Fisher
191	Gray	191	Atascosa	191	Hudspeth	189	Hockley
192	Hunt	192	Ochiltree	192	Dallas	189	Martin
193	Howard	193	Deaf Smith	193	Polk	193	Guadalupe
194	Shelby	194	Parmer	194	Potter	194	Nolan
195	Nueces	195	Wheeler	195	Bee	195	Matagorda
196	Navarro	196	Knox	196	Jasper	196	Polk
197	Mitchell	197	Freestone	197	El Paso	197	El Paso
198	Camp	198	Eastland	198	Houston	198	Colorado
199	Robertson	199	San Saba	199	Newton	199	Jack
200	Taylor	200	Moore	200	Webb	200	Haskell
201	Anderson	201	Chambers	201	Cherokee	201	Parker
202	Walker	202	Jones	202	Uvalde	202	Brooks
203	Titus	203	Presidio	203	Jefferson	202	Jim Hogg
204	Cherokee	204	San Jacinto	204	Sabine	202	Sabine
205	Jefferson	205	Crane	205	Marion	202	San Jacinto
206	Johnson	206	Falls	206	San Augustine	202	Willacy
207	Victoria	207	Hall	207	Frio	207	Montgomery
208	Gregg	208	Liberty	208	Jim Wells	208	Cass
209	Wise	209	DeWitt	209	La Salle	209	Collin
210	Ellis	210	Red River	210	Morris	210	Dallas
211	Wharton	211	Pecos	211	Zapata	211	Hudspeth
212	Ector	212	Gaines	212	Duval	211	Sutton
213	Harrison	213	Comanche	213	Matagorda	213	Brazoria
214	Kaufman	214	Castro	214	Reeves	214	Cooke
215	Angelina	215	Collingsworth	215	Presidio	215	Denton
216	Jasper	216	Webb	216	Brooks	216	Bowie
217	Orange	217	Starr	217	Cameron	217	Wise
218	Polk	218	Reeves	218	Hidalgo	218	Jefferson
219	Nacogdoches	219	Upton	219	Maverick	219	Bexar
220	Bastrop	220	Zapata	220	Dimmit	220	Tarrant
221	Bell	221	Maverick	221	Zavala	221	Austin
222	McLennan	222	Crosby	222	Willacy	222	Fort Bend
223	Potter	223	Culberson	223	Starr	223	Harris

## 2011 County Health Rankings: Measures, Data Sources, and Years of Data

	Measure	Data Source	Years of Data
<b>HEALTH OUTCOMES</b>			
<b>Mortality</b>	Premature death	National Center for Health Statistics	2005-2007
<b>Morbidity</b>	Poor or fair health	Behavioral Risk Factor Surveillance System	2003-2009
	Poor physical health days	Behavioral Risk Factor Surveillance System	2003-2009
	Poor mental health days	Behavioral Risk Factor Surveillance System	2003-2009
	Low birthweight	National Center for Health Statistics	2001-2007
<b>HEALTH FACTORS</b>			
<b>HEALTH BEHAVIORS</b>			
<b>Tobacco</b>	Adult smoking	Behavioral Risk Factor Surveillance System	2003-2009
<b>Diet and Exercise</b>	Adult obesity	National Center for Chronic Disease Prevention and Health Promotion	2008
<b>Alcohol Use</b>	Excessive drinking	Behavioral Risk Factor Surveillance System	2003-2009
	Motor vehicle crash death rate	National Center for Health Statistics	2001-2007
<b>High Risk Sexual Behavior</b>	Sexually transmitted infections	National Center for Hepatitis, HIV, STD and TB Prevention	2008
	Teen birth rate	National Center for Health Statistics	2001-2007
<b>CLINICAL CARE</b>			
<b>Access to Care</b>	Uninsured adults	Small Area Health Insurance Estimates, U.S. Census	2007
	Primary care providers	Health Resources & Services Administration	2008
<b>Quality of Care</b>	Preventable hospital stays	Medicare/Dartmouth Institute	2006-2007
	Diabetic screening	Medicare/Dartmouth Institute	2006-2007
	Mammography screening	Medicare/Dartmouth Institute	2006-2007
<b>SOCIOECONOMIC FACTORS</b>			
<b>Education</b>	High school graduation	National Center for Education Statistics <sup>1</sup>	2006-2007
	Some college	American Community Survey	2005-2009
<b>Employment</b>	Unemployment	Bureau of Labor Statistics	2009
<b>Income</b>	Children in poverty	Small Area Income and Poverty Estimates, U.S. Census	2008
<b>Family and Social Support</b>	Inadequate social support	Behavioral Risk Factor Surveillance System	2005-2009
	Single-parent households	American Community Survey	2005-2009
<b>Community Safety</b>	Violent crime <sup>2</sup>	Uniform Crime Reporting, Federal Bureau of Investigation	2006-2008
<b>PHYSICAL ENVIRONMENT</b>			
<b>Air Quality<sup>3</sup></b>	Air pollution-particulate matter days	U.S. Environmental Protection Agency / Centers for Disease Control and Prevention	2006
	Air pollution-ozone days	U.S. Environmental Protection Agency / Centers for Disease Control and Prevention	2006
<b>Built Environment</b>	Access to healthy foods	Census Zip Code Business Patterns	2008
	Access to recreational facilities	Census County Business Patterns	2008

<sup>1</sup> State data sources for KY, NH, NC, PA, SC, and UT (2008-2009).

<sup>2</sup> Homicide rate (2001-2007) from National Center for Health Statistics for AK, AZ, AR, CO, CT, GA, ID, IN, IA, KS, KY, LA, MN, MS, MT, NE, NH, NM, NC, ND, OH, SD, UT, and WV. State data source for IL.

<sup>3</sup> Not available for AK and HI.

## CREDITS

### **Report Authors**

University of Wisconsin-Madison  
School of Medicine and Public Health  
Department of Population Health Sciences  
Population Health Institute

Bridget Booske, PhD, MHSA  
Jessica Athens, MS  
Patrick Remington, MD, MPH

This publication would not have been possible without the following contributions:

### **Technical Advisors**

Amy Bernstein, ScD, Centers for Disease Control and Prevention  
Michele Bohm, MPH, Centers for Disease Control and Prevention

### **Research Assistance**

Jennifer Buechner  
Hyojun Park, MA  
Seth Prins, MPH  
Jennifer Robinson  
Matthew Rodock  
Anne Roubal

### **Communications and Outreach**

Burness Communications  
Ivan Cherniack  
Nathan Jones, PhD  
Kate Konkle, MPH  
Angela Russell  
Julie Willems Van Dijk, PhD, RN

### **Design**

Forum One, Alexandria, VA  
Media Solutions, UW School of Medicine and Public Health

### **Robert Wood Johnson Foundation**

Brenda L. Henry, PhD, MPH – Program Officer  
Michelle Larkin, JD, MS, RN – Team Director and Senior Program Officer  
James S. Marks, MD, MPH – Senior Vice President and Group Director, Health Group  
Joe Marx – Senior Communications Officer

Suggested citation: University of Wisconsin Population Health Institute. *County Health Rankings 2011*.





# County Health Rankings

Mobilizing Action Toward Community Health

[countyhealthrankings.org](http://countyhealthrankings.org)



**University of Wisconsin Population Health Institute**  
610 Walnut St, #524, Madison, WI 53726  
(608) 265-6370 / [info@countyhealthrankings.org](mailto:info@countyhealthrankings.org)